

Tools and Methods for Model Based Development of Predictive Driver Assistance Systems



Thomas Gockeln

dSPACE GmbH · Rathenaustraße 26 · 33102 Paderborn

<Stuttgart· 23.06.2010>

- World's leading provider of solutions for developing ECU software and mechatronic controls
- dSPACE worldwide
 - Headquarters in Paderborn, Germany
 - Subsidiaries in the USA, France, the UK, Japan and China
 - Distributors in 9 other countries
- 55% of sales are in exports
- Over 800 employees worldwide



Location Paderborn – Headquarters

- Development
- Administration
- Engineering
- Sales

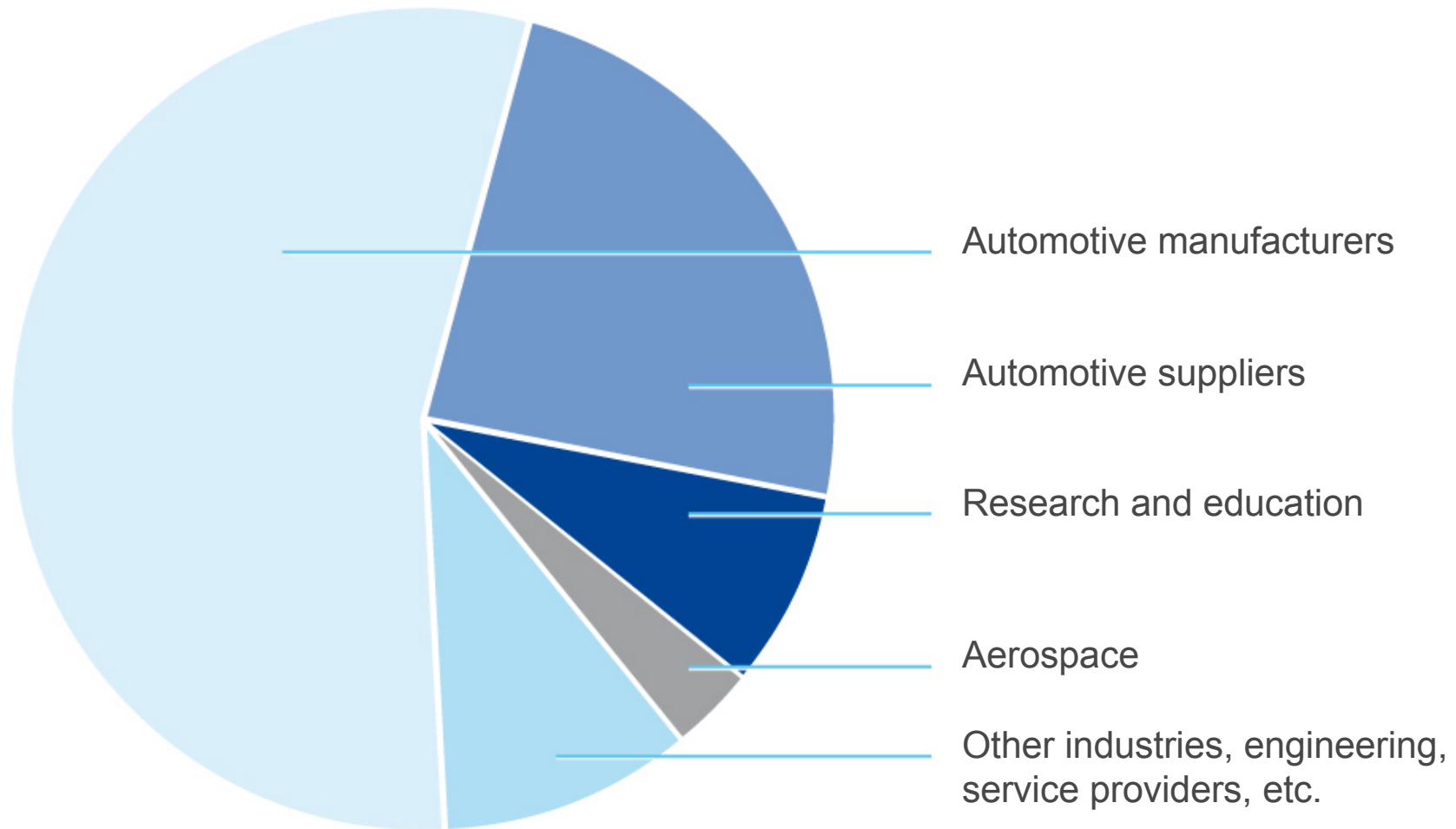
Location Pfaffenhofen/Munich

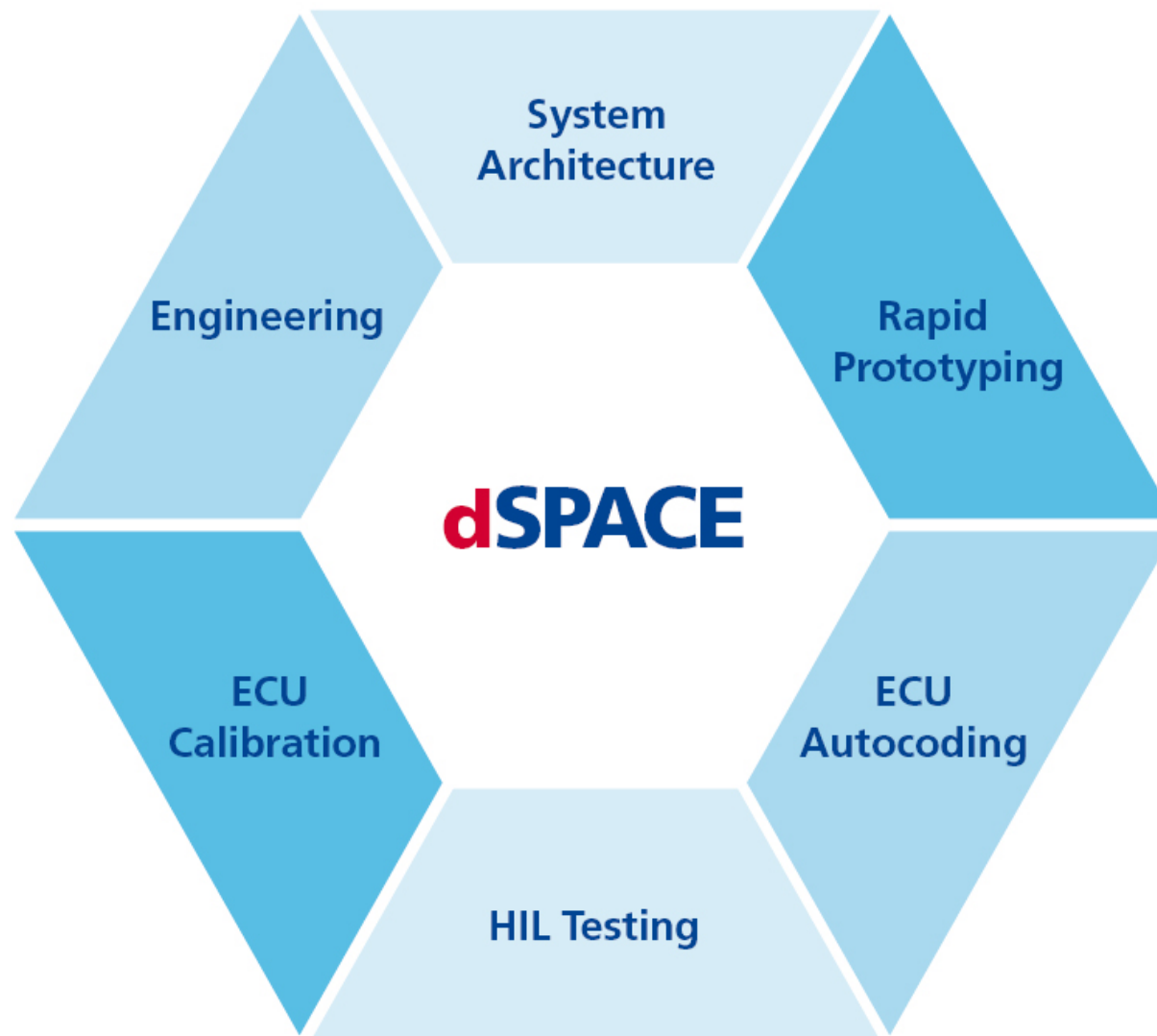
- Engineering
- Sales

Location Holzgerlingen/Stuttgart

- Engineering
- Sales

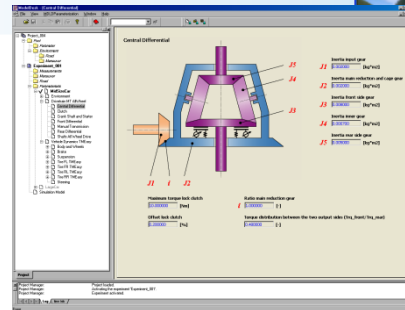




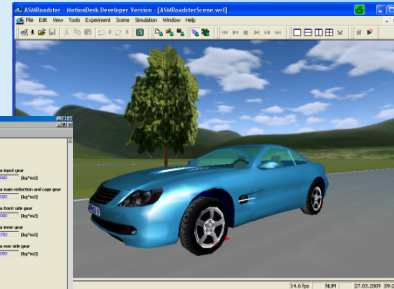


ASM Tool Suite

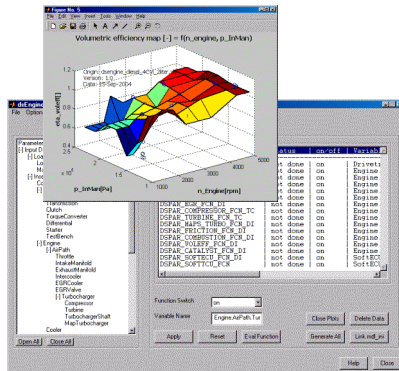
dSPACE



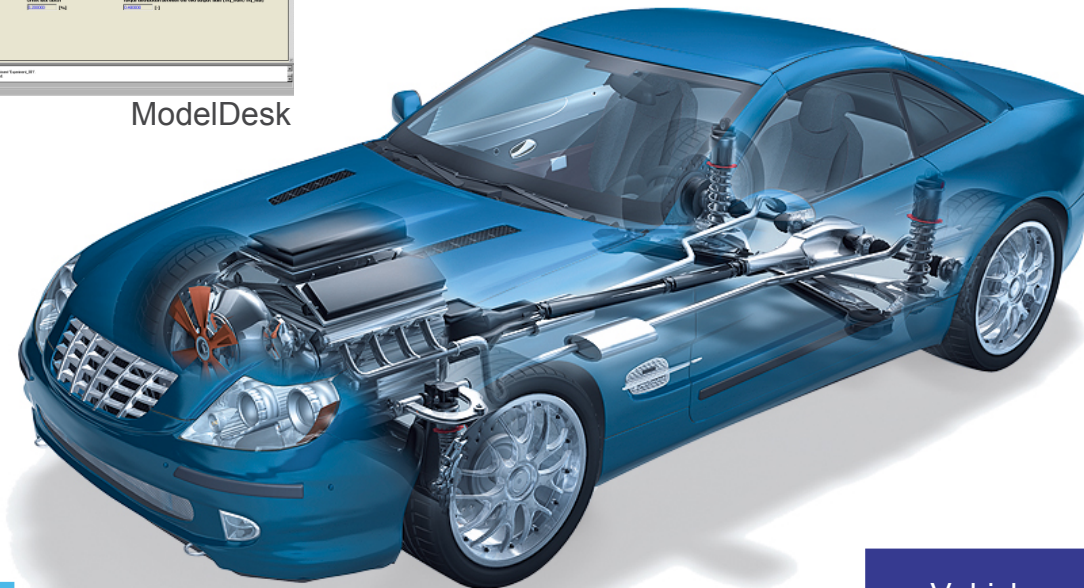
ModelDesk



MotionDesk



ASMPara



Truck

Trailer

BrakeHydraulics

Vehicle
Dynamics

Traffic



Matlab

Simulink



TurboCharger

DrivetrainBasic

DieselExhaust

Engine
Gasoline
Basic

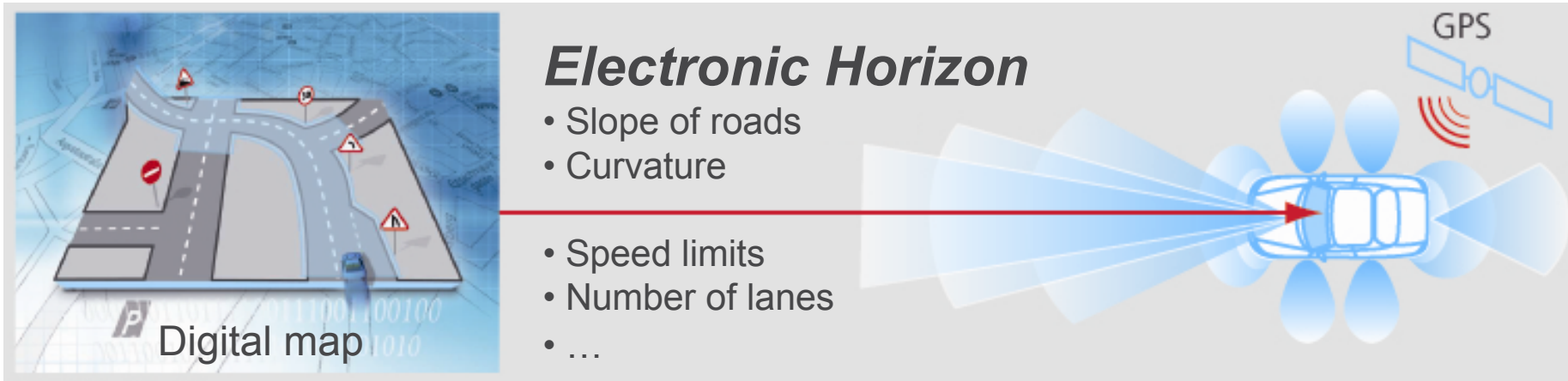
Engine
Gasoline

Engine
Gasoline
In-Cylinder

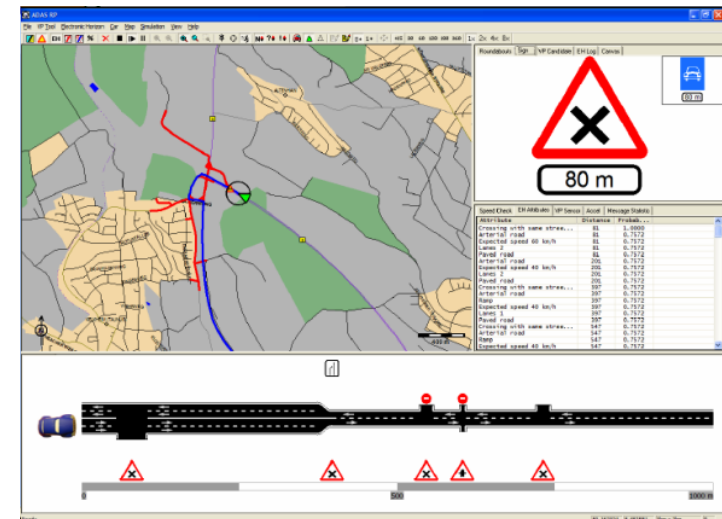
Engine
Diesel

Engine
Diesel
In-Cylinder

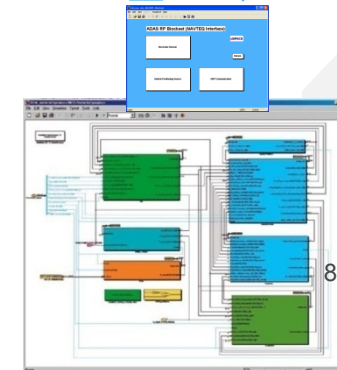
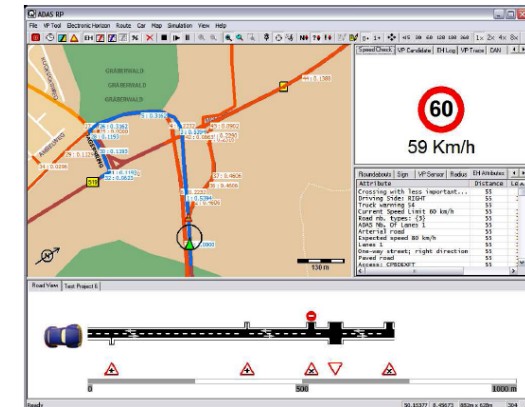
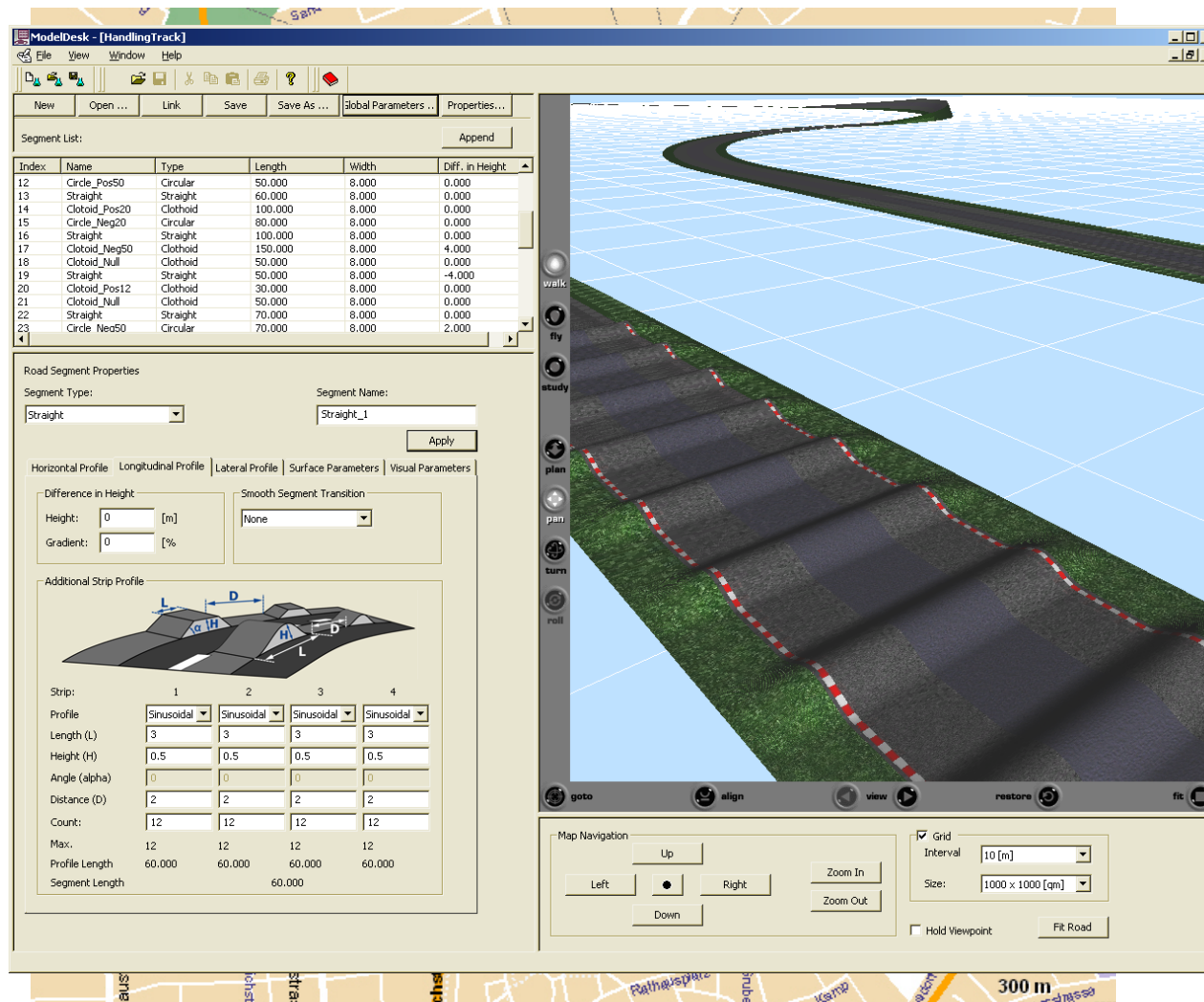
Electric
Components



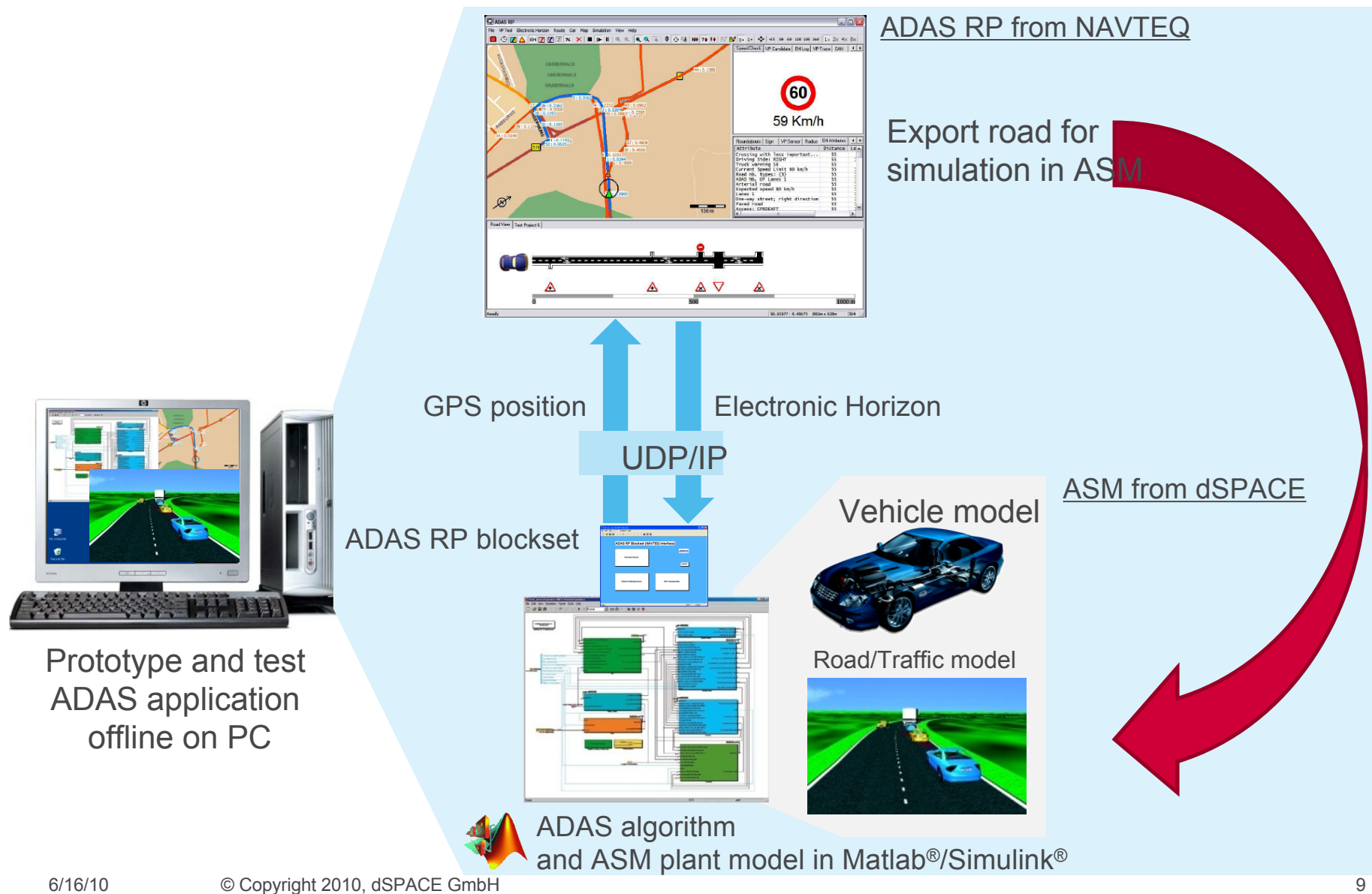
- Cooperation with NAVTEQ
- Interface to ADAS RP from NAVTEQ
- Automotive Simulation Models (ASM)
- MicroAutoBox and AutoBox
- Hardware-on-the-loop simulator



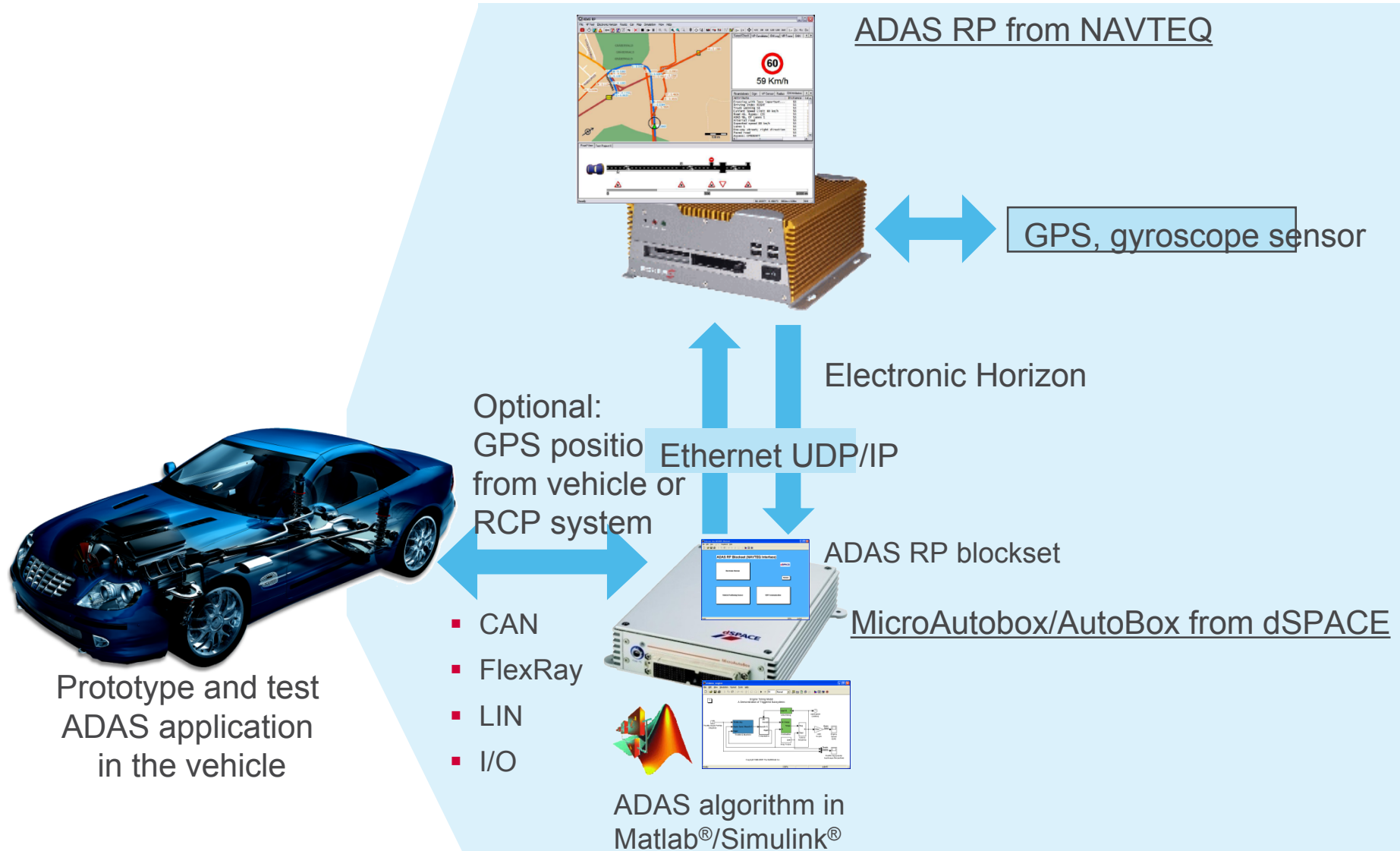
ADAS RP Route to export



Electronic Horizon – Function Development with ASM

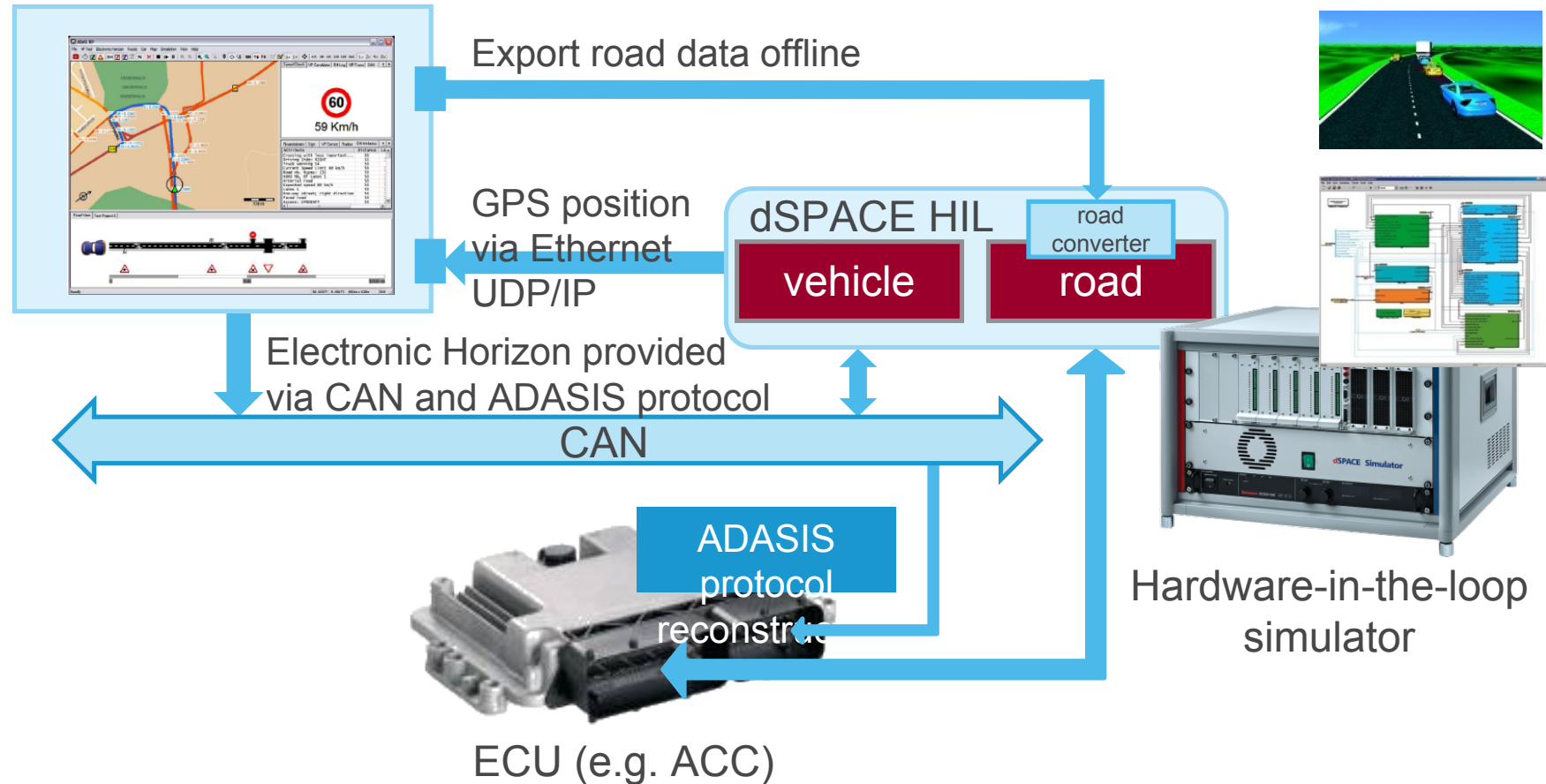


Electronic Horizon – Function Prototyping with RCP systems **dSPACE**



Electronic Horizon – Real time HIL testing with ASM

ADAS RP from NAVTEQ



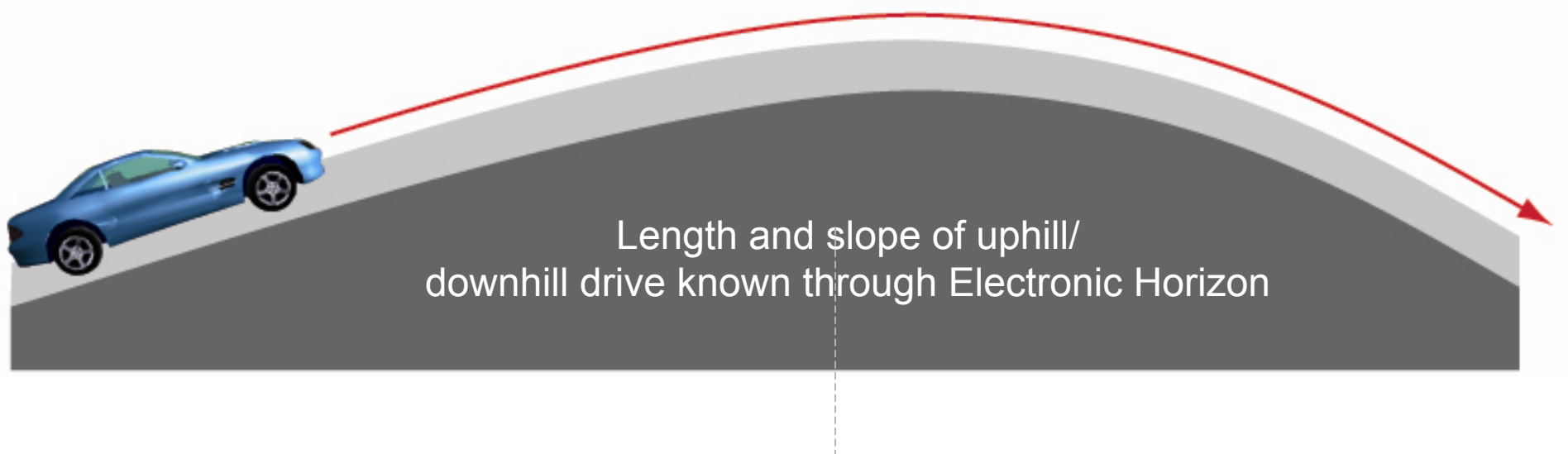
- Energy management strategies with hybrid electric vehicles (HEVs)



Extended use of E-motor to support
combustion engine -> Discharge battery



Charge battery
Energy recuperation



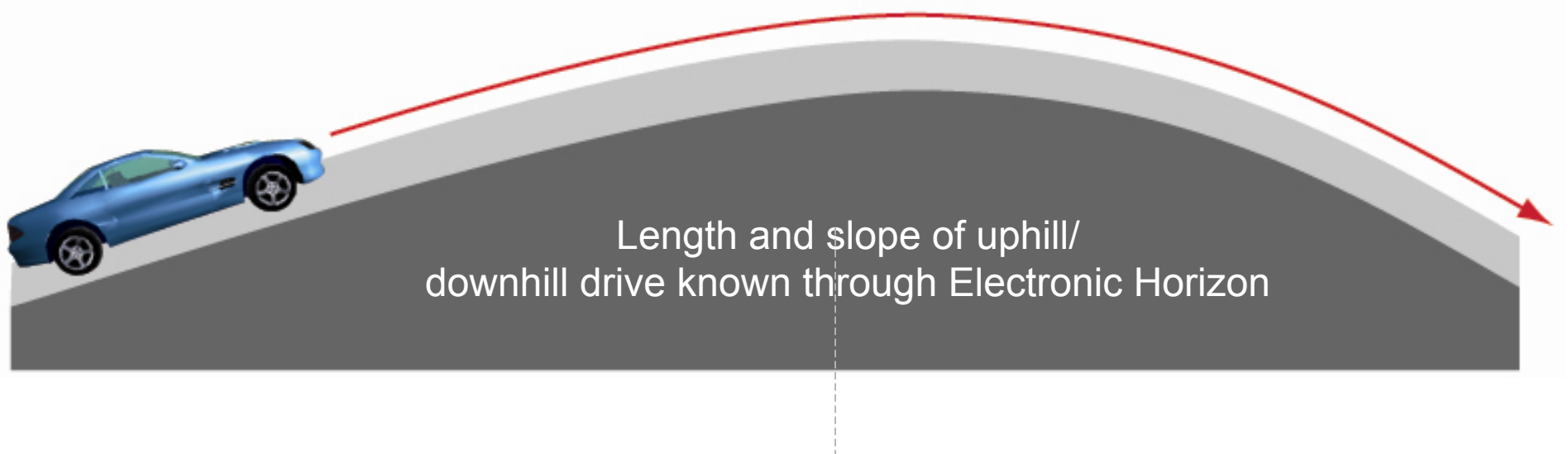
- Efficient concepts for engine cooling



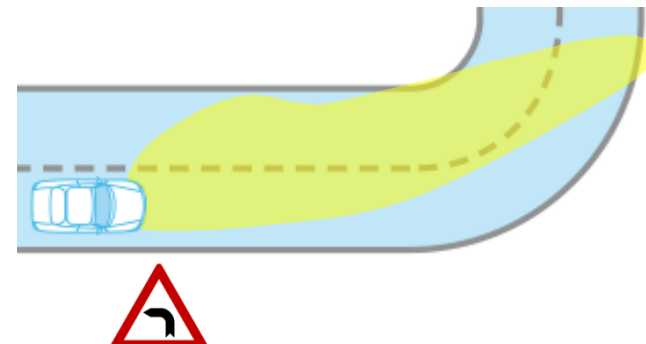
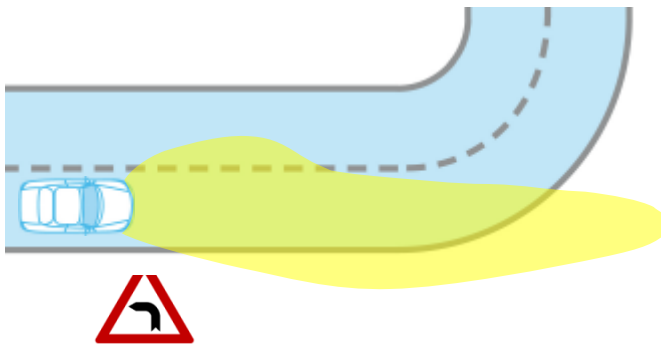
Reduce cooling capacity before reaching the top of the hill



Use air flow to cool down the engine



- Predictive headlights
 - Use curvature information from Electronic Horizon to provide enhanced road visibility
 - Light curve before actually turning into the bend



- Curve speed warning
 - Use curvature information from Electronic Horizon to alert driver of hazardous and dangerous situations



Important Notice



© Copyright 2010, dSPACE GmbH

All rights reserved. Written permission is required for reproduction of all or parts of this publication.
The source must be stated in any such reproduction.

This publication and the contents hereof are subject to change without notice.
Brand names or product names are trademarks or registered trademarks of their respective companies or organizations.