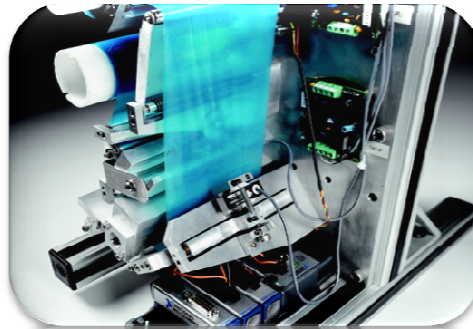

Creating Real-Time Testing Applications with a Configuration Based Testing Platform

Balázs Tóth – National Instruments

Dynamic Systems



Medical Devices



Industrial Machines



Power Generation Systems



White Goods



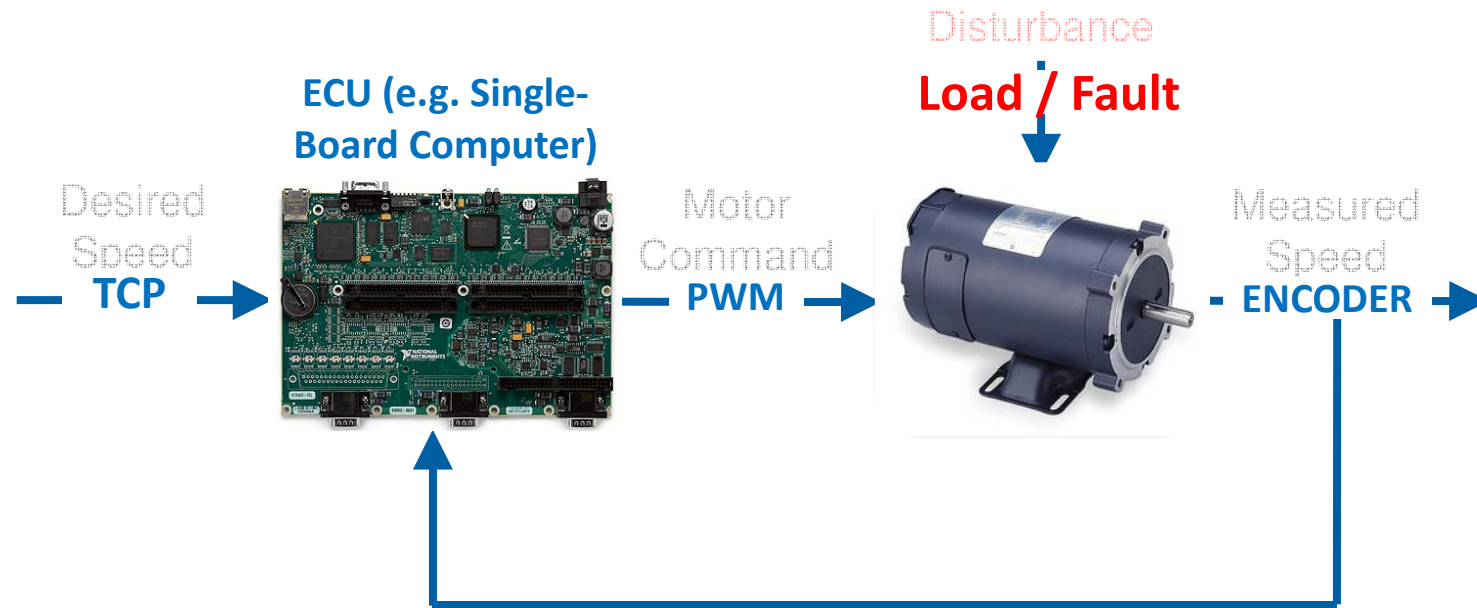
Aerospace



Automotive

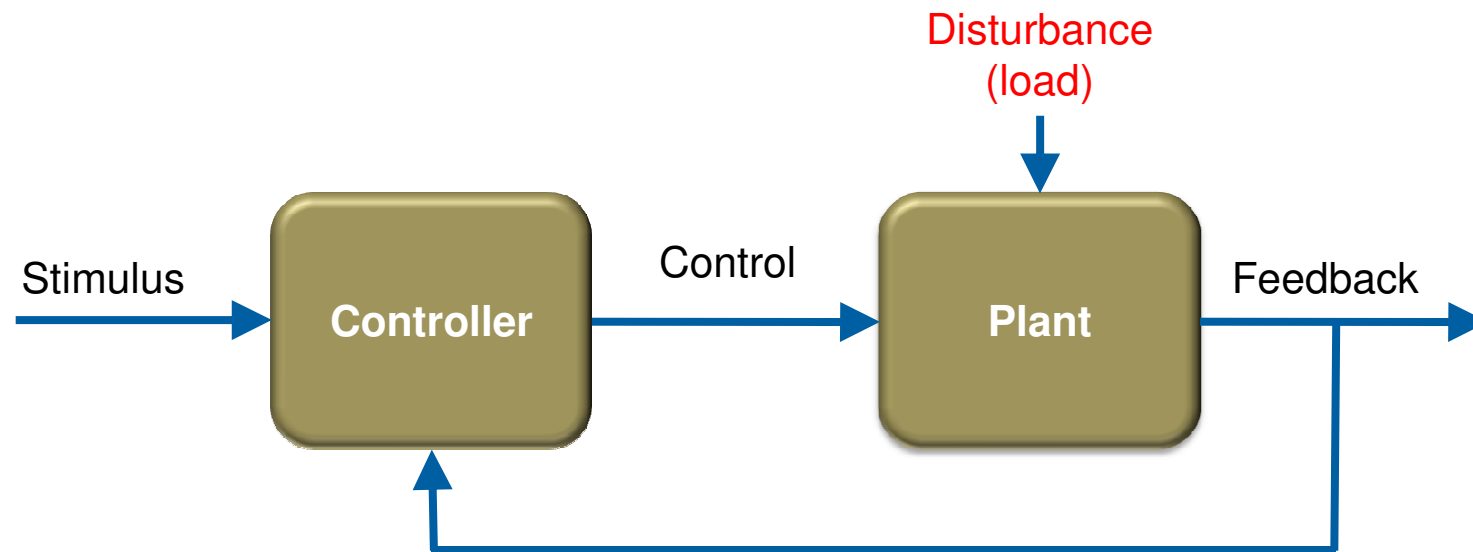
Controlling Dynamic Systems

Closed-Loop Control



Closed-Loop Control — Common Terms

- **Plant** – Device to be controlled
 - Engine, Airplane, Wind Turbine
- **Controller** – Device to control the plant
 - Needs to be developed and tested



Dynamic Systems — Testing Challenges

- Increasing application complexity
- Increasing reliability requirements

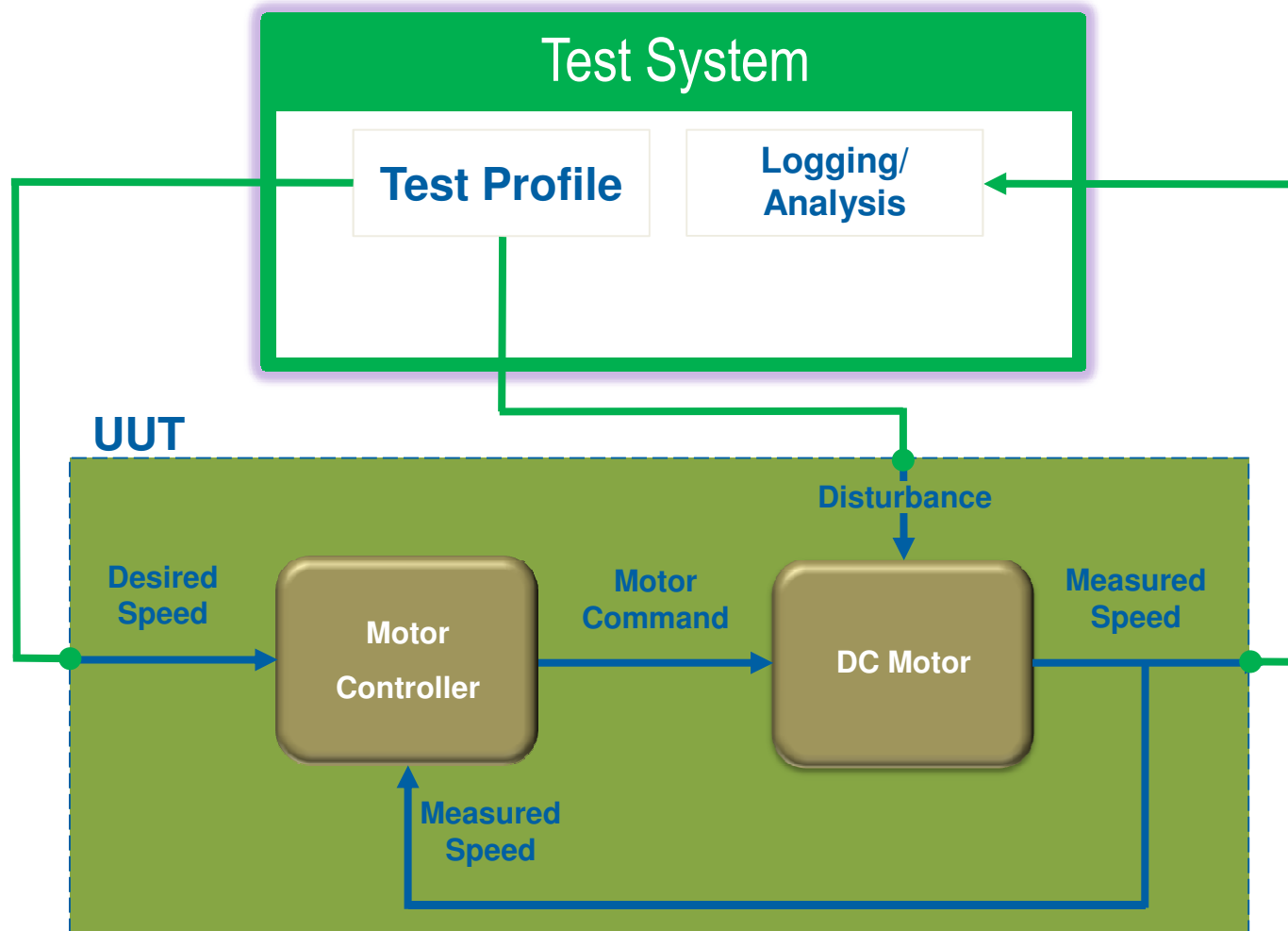
- Decreasing time-to-market
- Reduce development cost



Are these mutually exclusive?

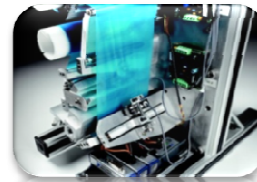
Testing Dynamic Systems

System Level Testing



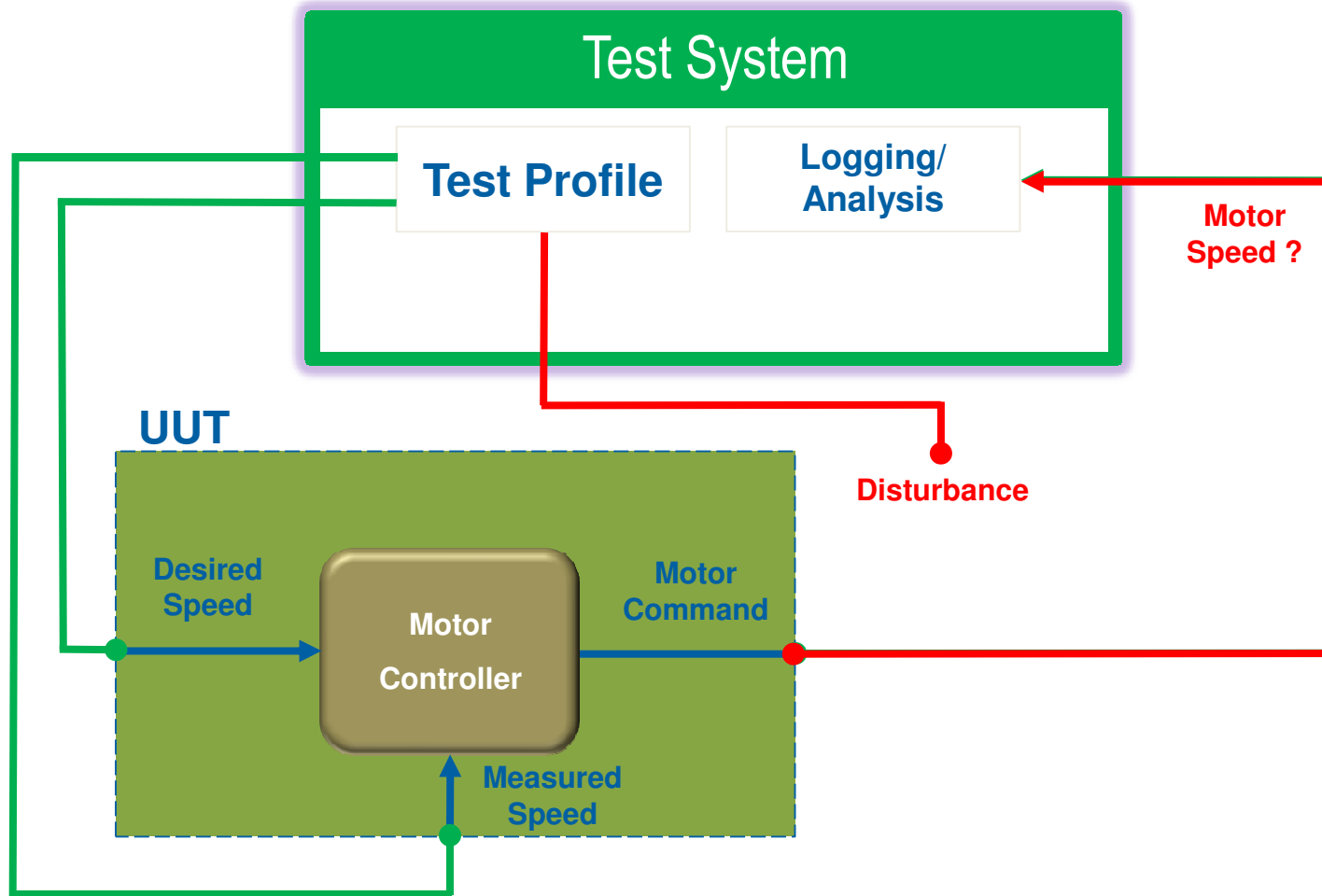
System Level Testing Challenges

- Cost to test (capital, maintenance, facilities)
- Cost of failure
- Availability
- System Variation
- Reproducibility



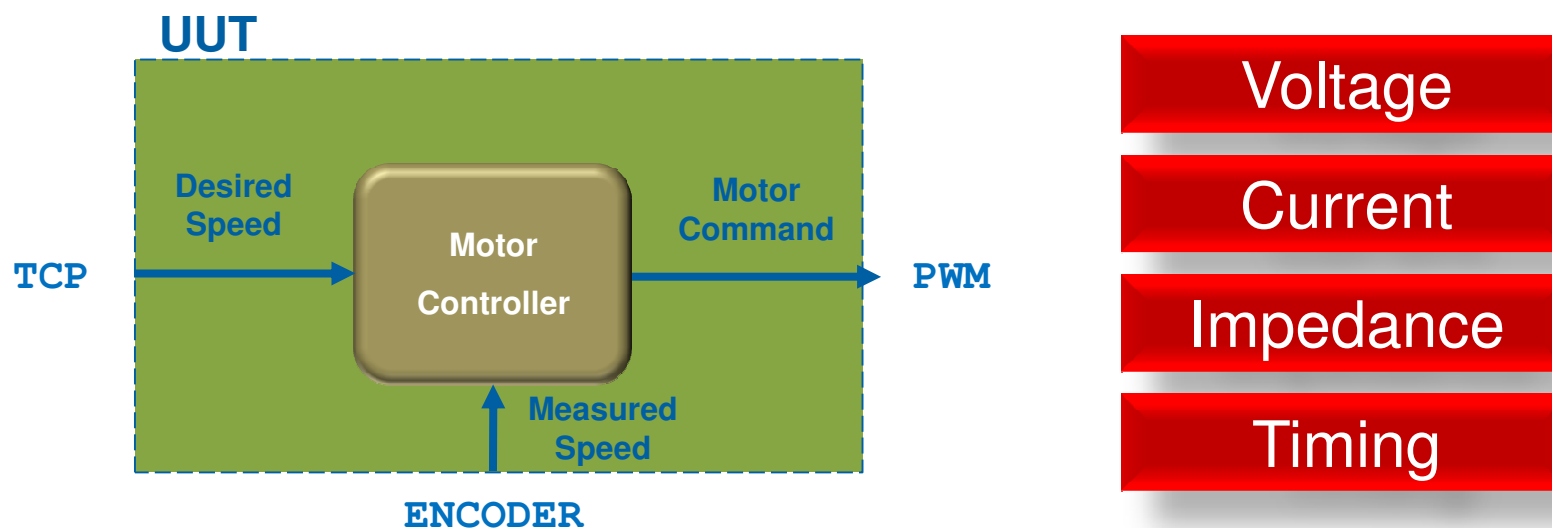
Testing Dynamic Systems

Component Level Testing Challenges



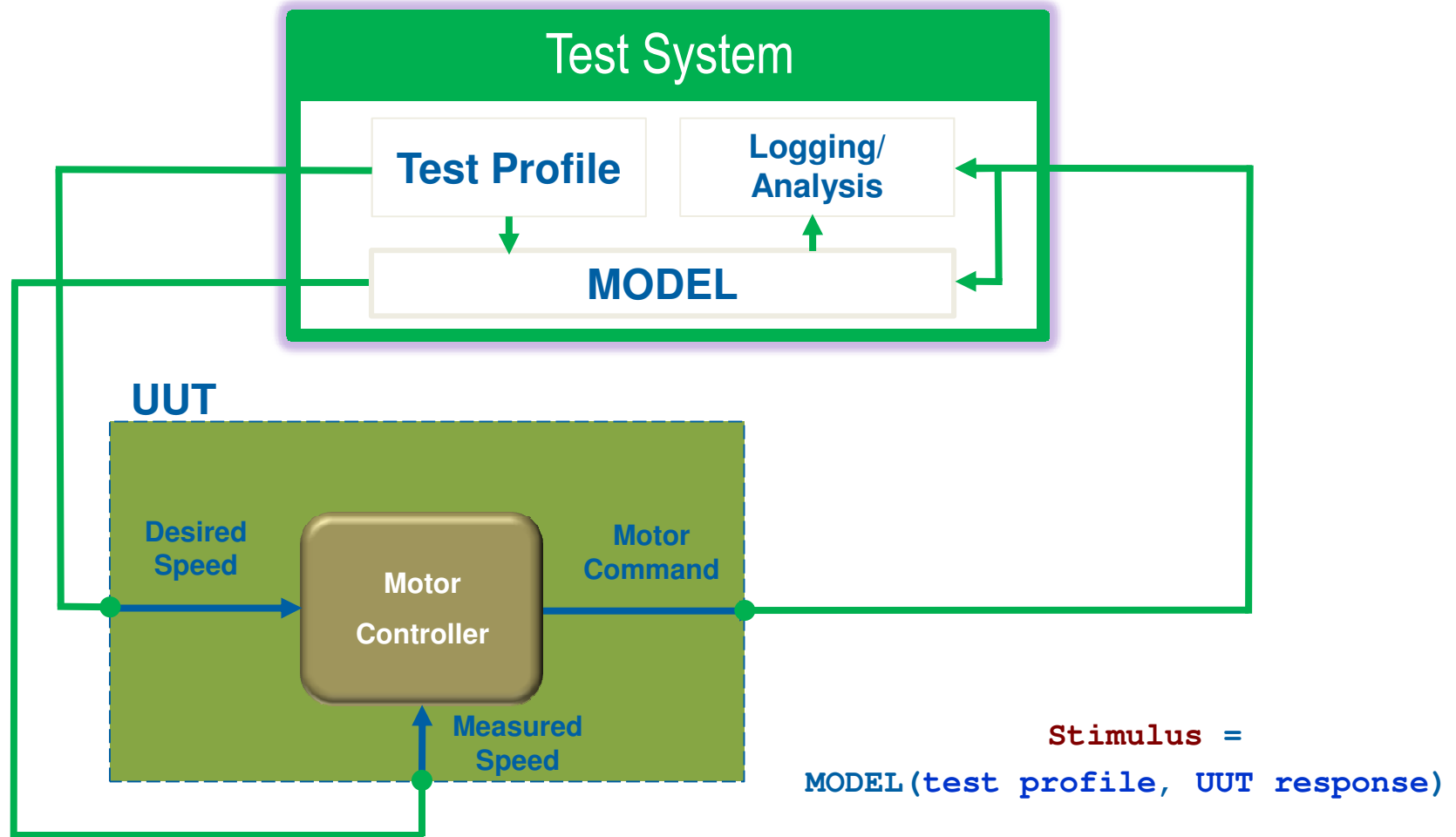
Virtual Reality for your UUT

What does your UUT *know* about the world around it?



Testing Dynamic Systems

Virtual System Level Testing

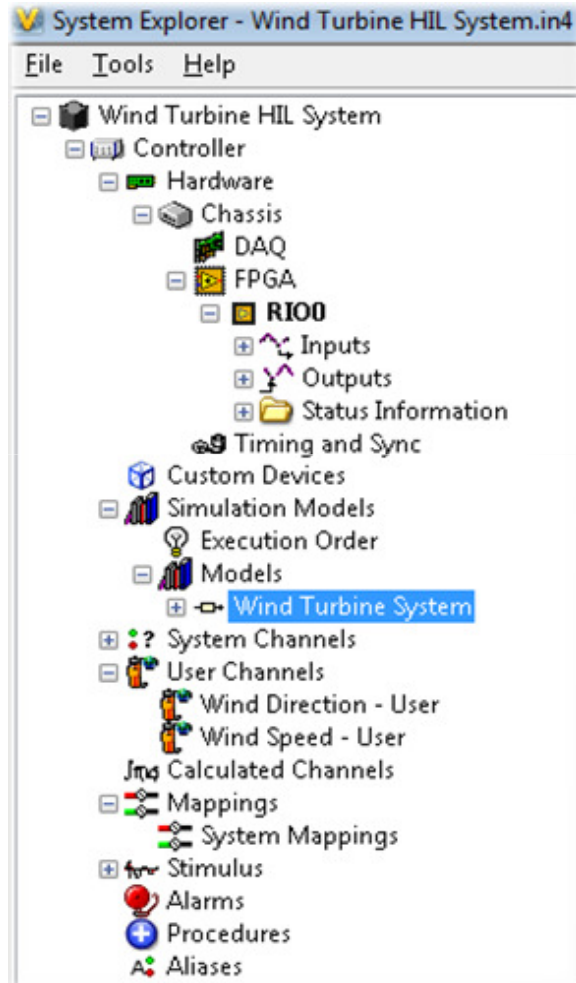


Test System Requirements

- Run-time Editable User Interface
- User Management
- Scalable
- Open Architecture
- Extendable
- Real-Time Stimulus Generation
- Data Logging in Real-Time
- Configurable I/O
- Closed-Loop Control
- Deterministic Model Execution

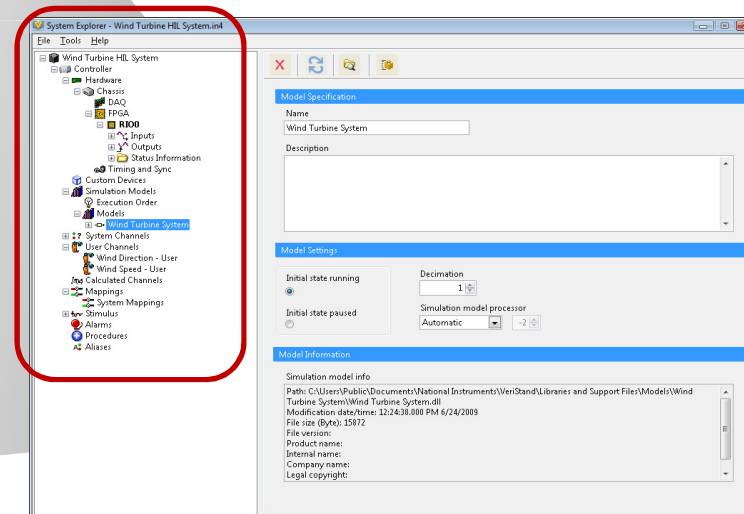


NI VeriStand Framework

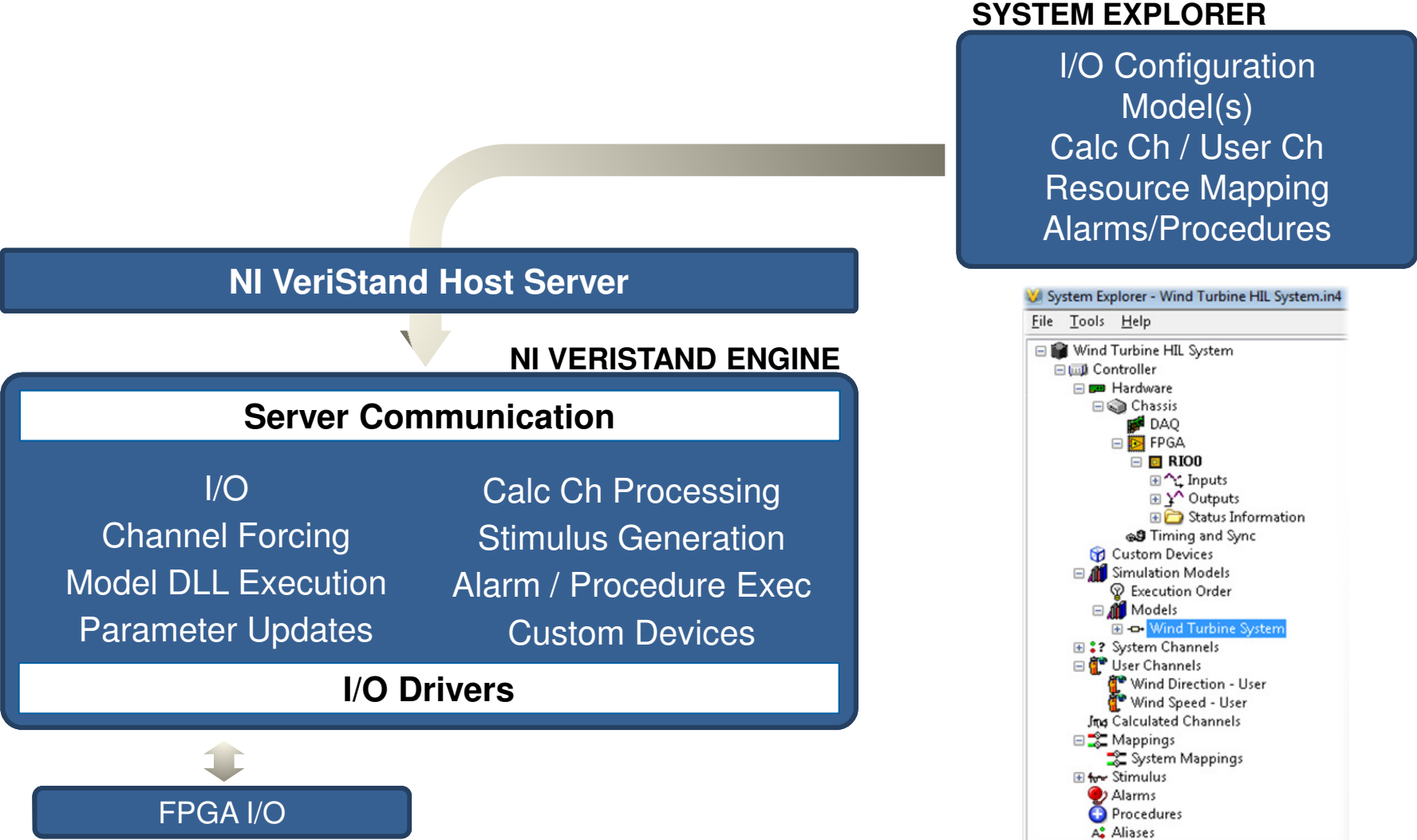


SYSTEM EXPLORER

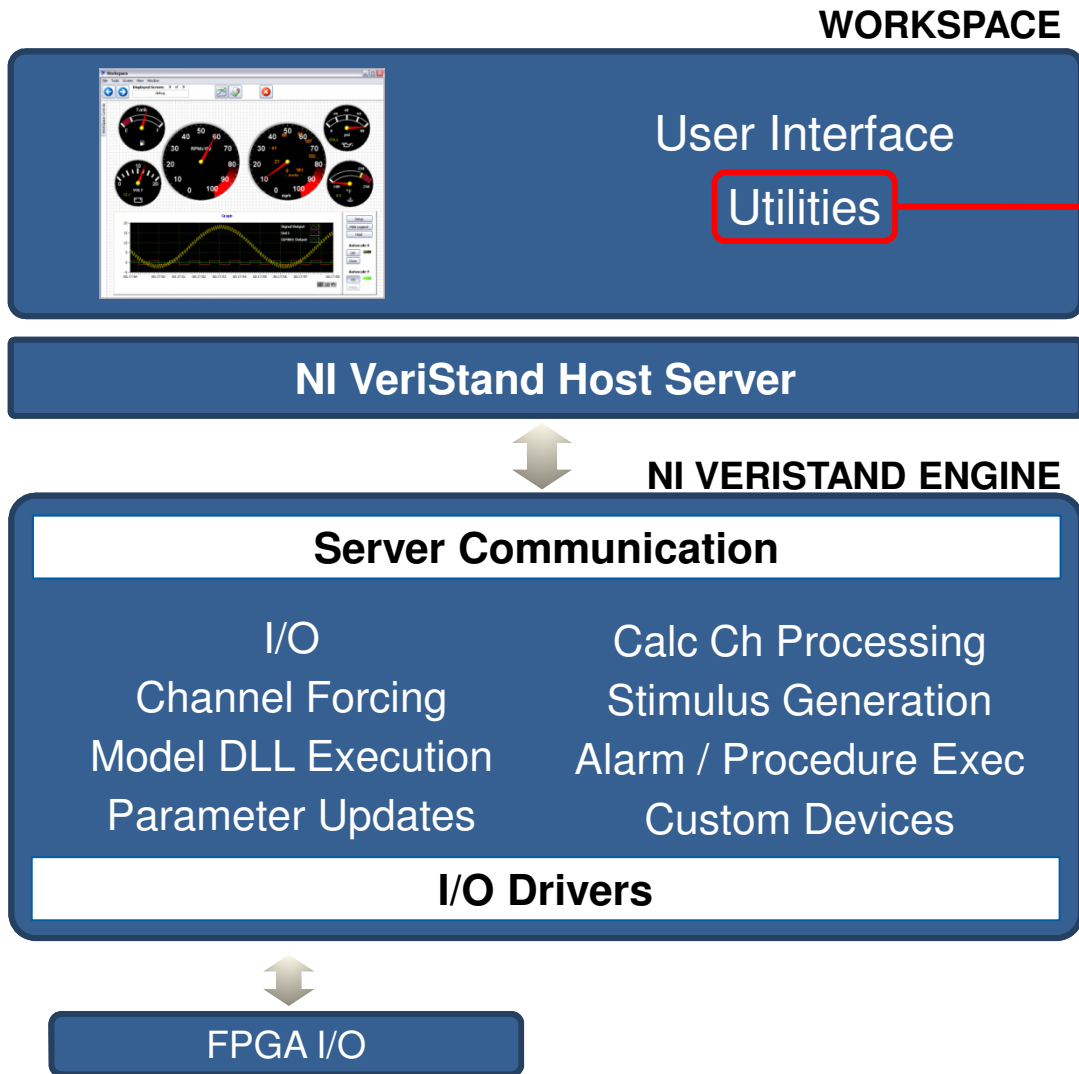
- Engine Resources
- I/O
- Model(s)
- Calc Ch / User Ch
- Resource Mapping
- Alarms/Procedures
- Aliases



NI VeriStand Framework – System Explorer



NI VeriStand Framework – Workspace



OBSERVE:

- Alarm Monitor
- CAN Bus Monitor
- Channel Data Viewer
- TDMS File Viewer
- RT Console Viewer

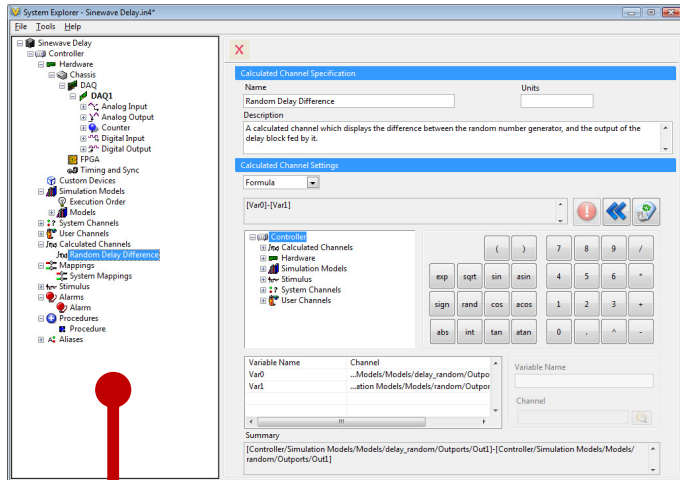
ACTION:

- Channel Scaling & Calibration
- Channel Value Forcing
- Stimulus Profile Editor

CONFIGURATION:

- Model Parameter Manager
- Alarm Manager

Configure Real-Time Application



I/O
Calc Ch's
Alarms
Controllers

...

Run-time
Editable

Deploy Real-Time Stimulus/Logging Profiles

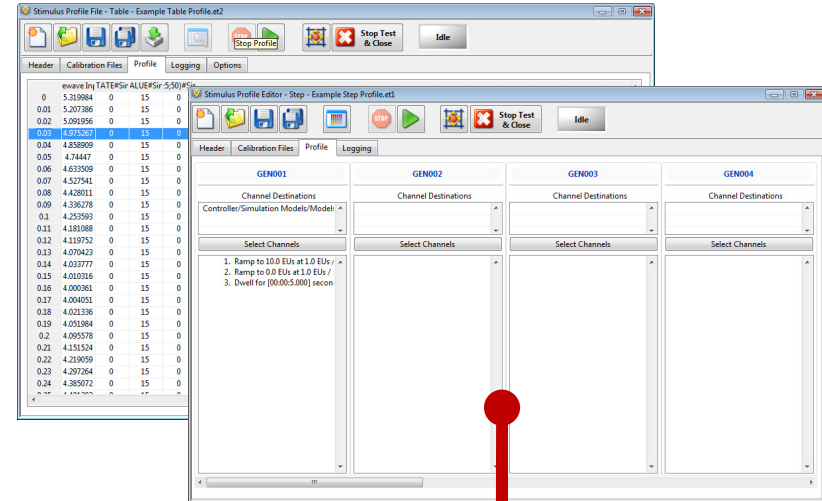
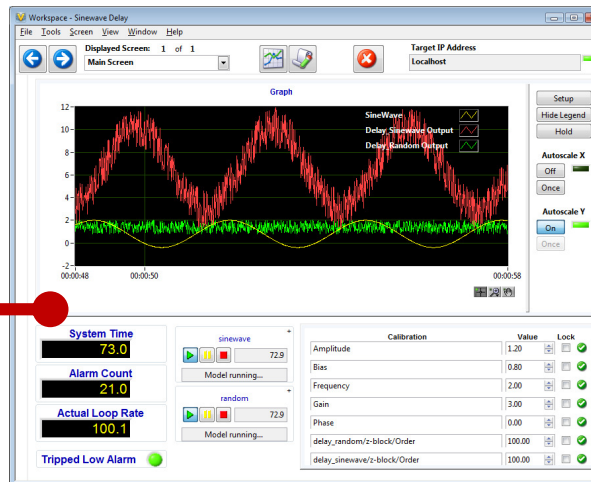
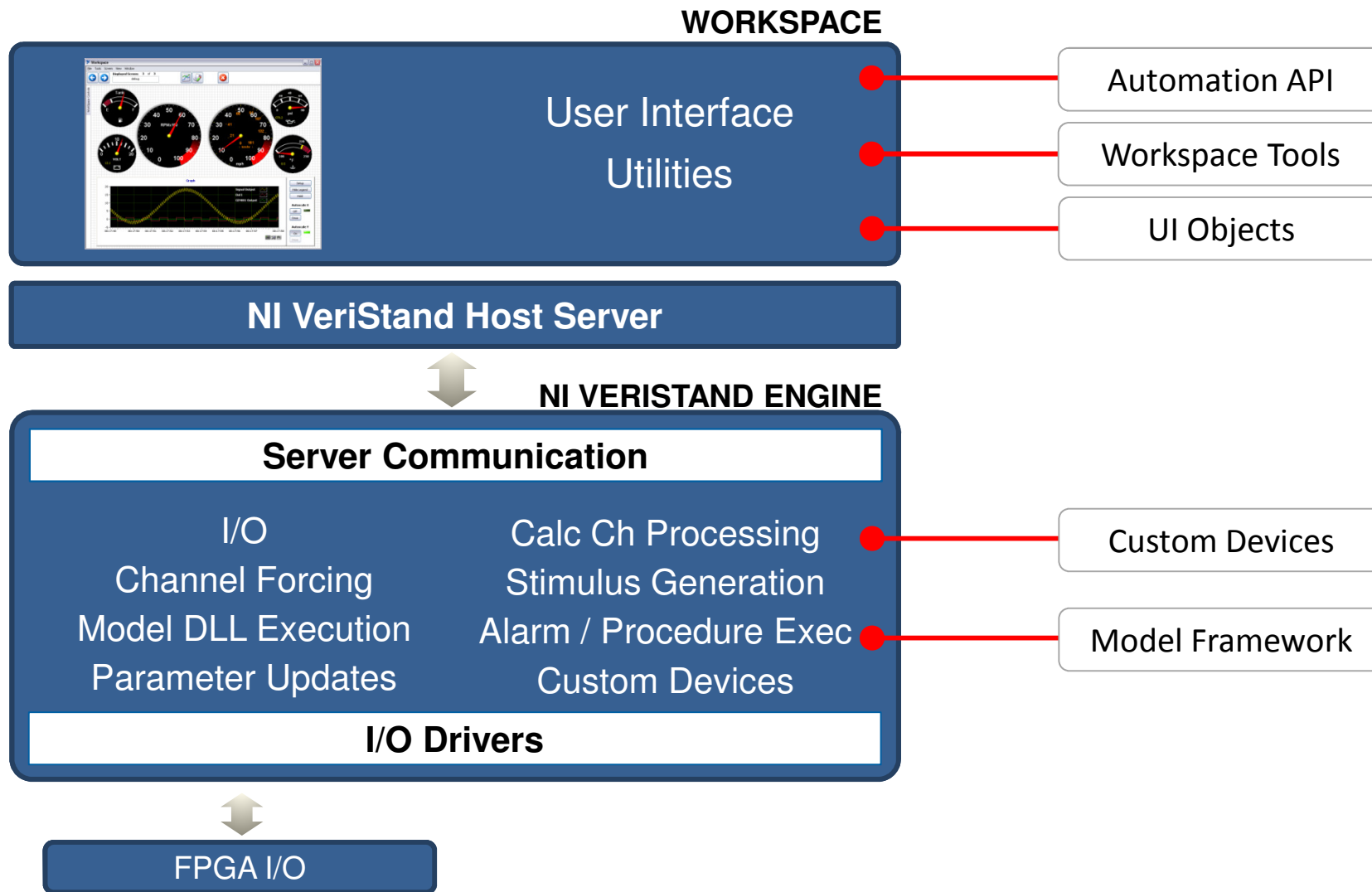


Table- and
Step-based
Stimulus



Create UI at Run-Time

NI VeriStand Framework – Customization



Supported Modeling Environments

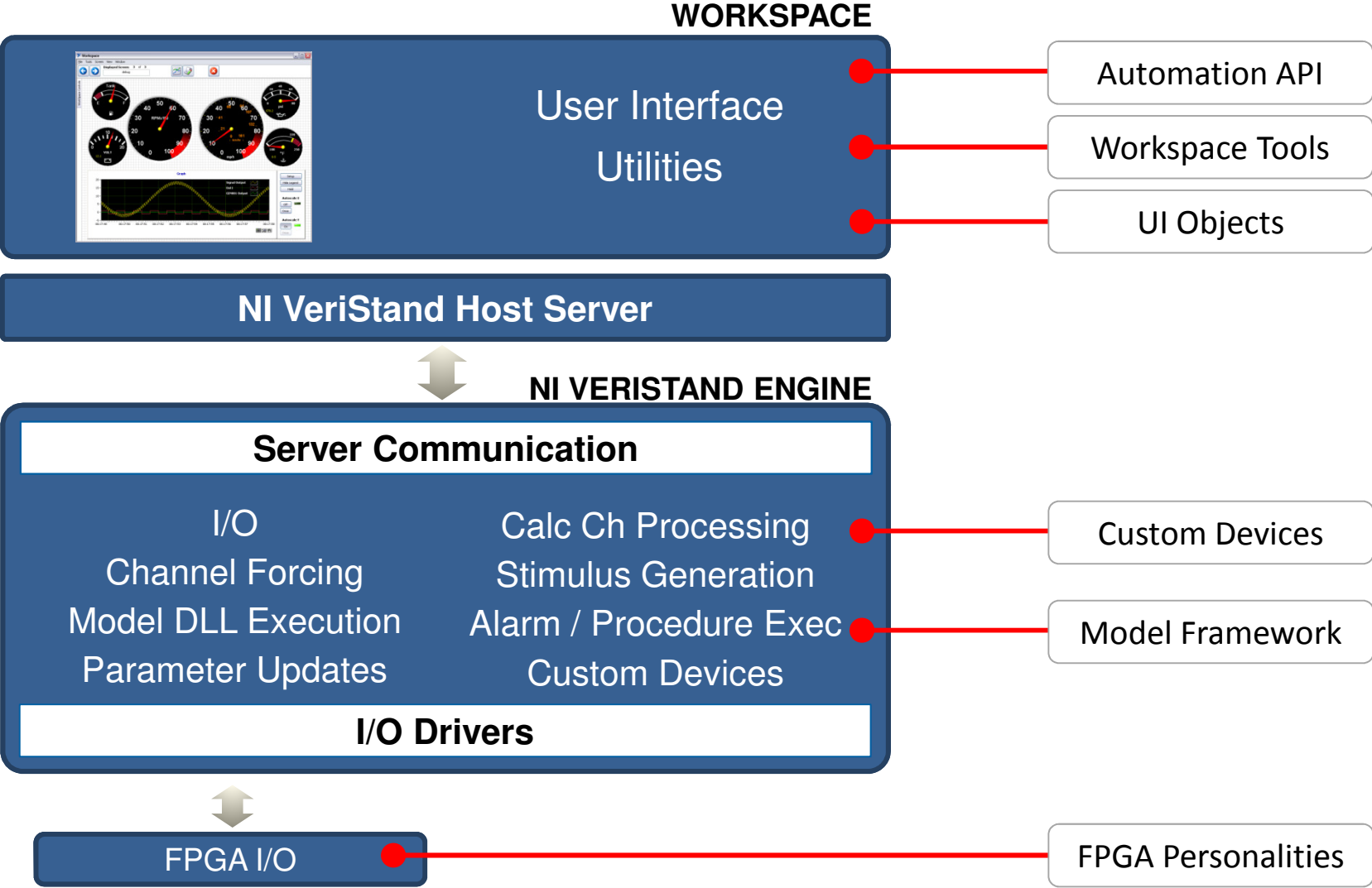
Supported:

- The MathWorks Simulink[®]
- LabVIEW CD & Sim
- MapleSim models from MapleSoft
- SimulationX from ITI
- Tesis DYNAware models
- NI MATRIXx SystemBuild
- Esterel Scade Suite
- C/C++

In-Work:

- CarSim from Mech Sim Corp.
- GT-Power engine models from Gamma Technologies, Inc
- AmeSim models from LMS
- WaveRT from Ricardo
- VI-Grade models
- Visual Solutions (VisSim)
- DynaSim models from Dymola

NI VeriStand Framework – Customization



Hardware Support



- NI-DAQmx Devices (incl. X-series & SCXI)
- R-series Devices
- NI-CAN Devices
- Goepel LIN Interface

- Lambda Power Supply
- NI Timing and Sync
- NI-XNET (FlexRay, etc...)*
- NI-FIU*
- *Custom Devices**

**Available as Add-on*

Additional Resources...

www.ni.com/veristand

- Demonstration Videos
- Getting Started Resources
- White Papers
- Add-ons
- Download Evaluation Version