

# Increase Overall Development and Test Efficiency by Integrating PLM and Testing

... using the example of PTC Windchill and AVL TFMS

Dr. Gerald Sammer, 22.6.2010, AVL List GmbH

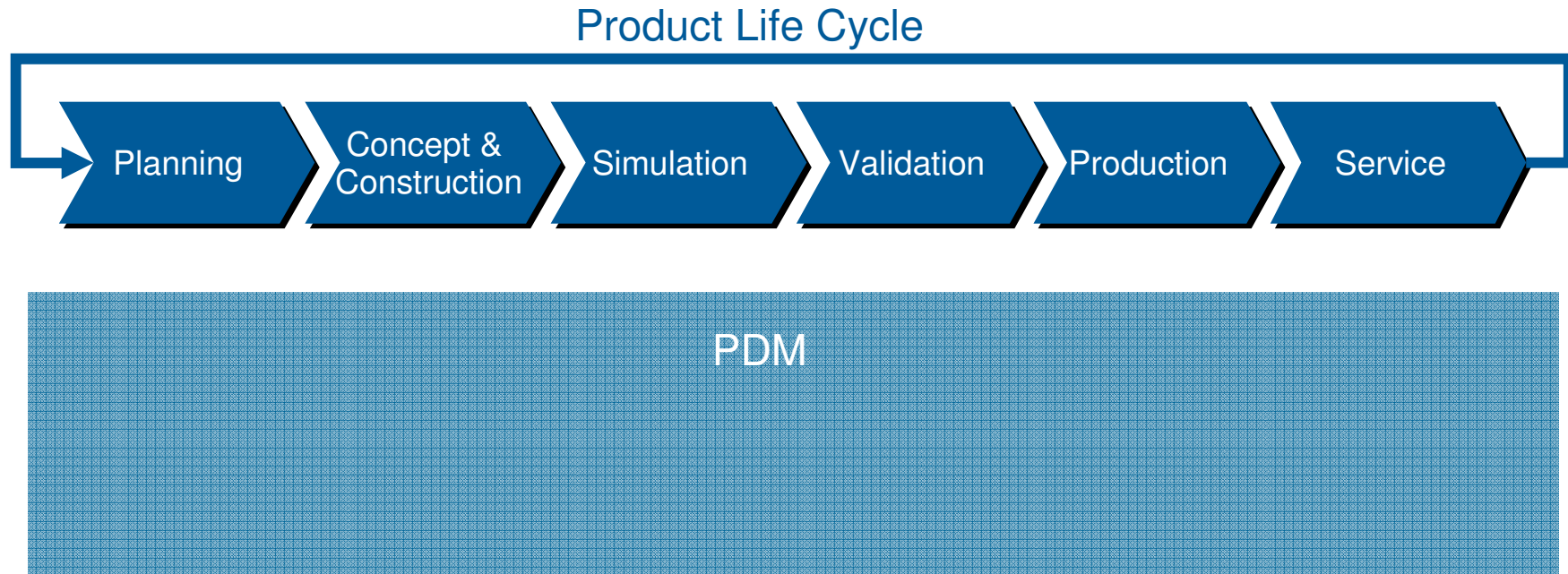


# Role of PDM in the product development process

## Product Life Cycle



# Role of PDM in the product development process





# Role of PDM in the product development process

## Product Life Cycle

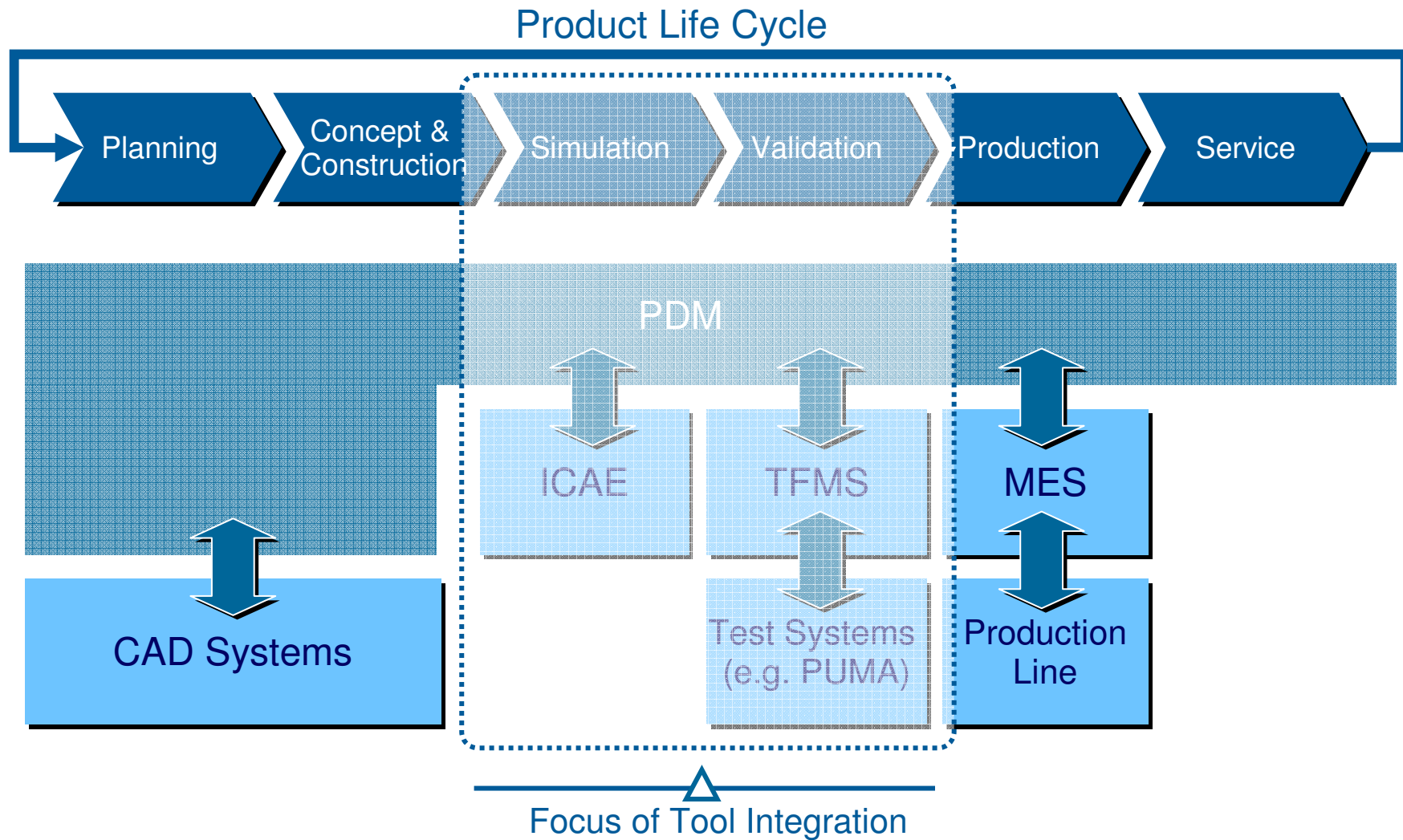


Ability to support in detail  
with typical PDM features

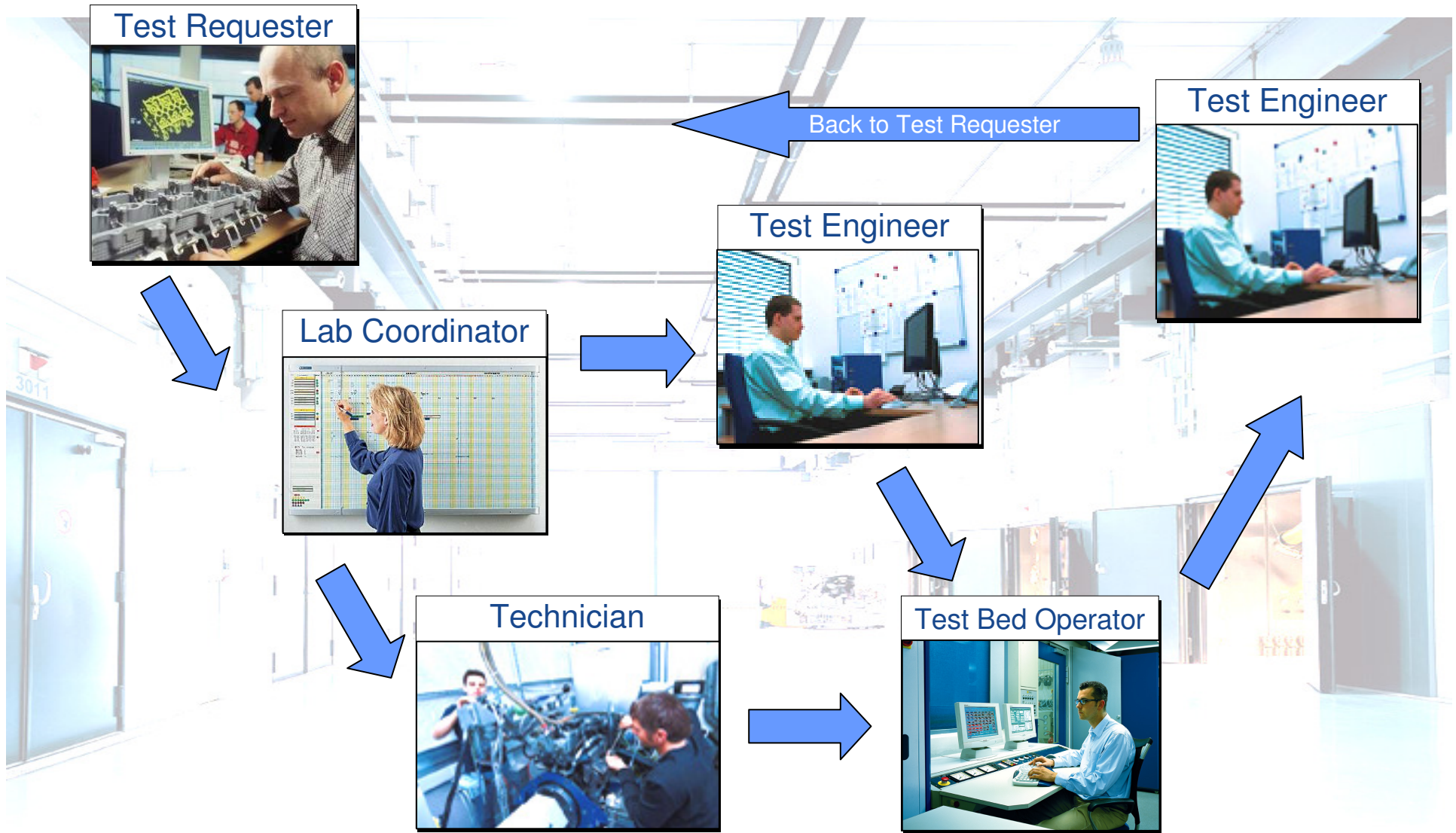
PDM

No deep PDM support as they are  
available in other systems

# Role of PDM in the product development process

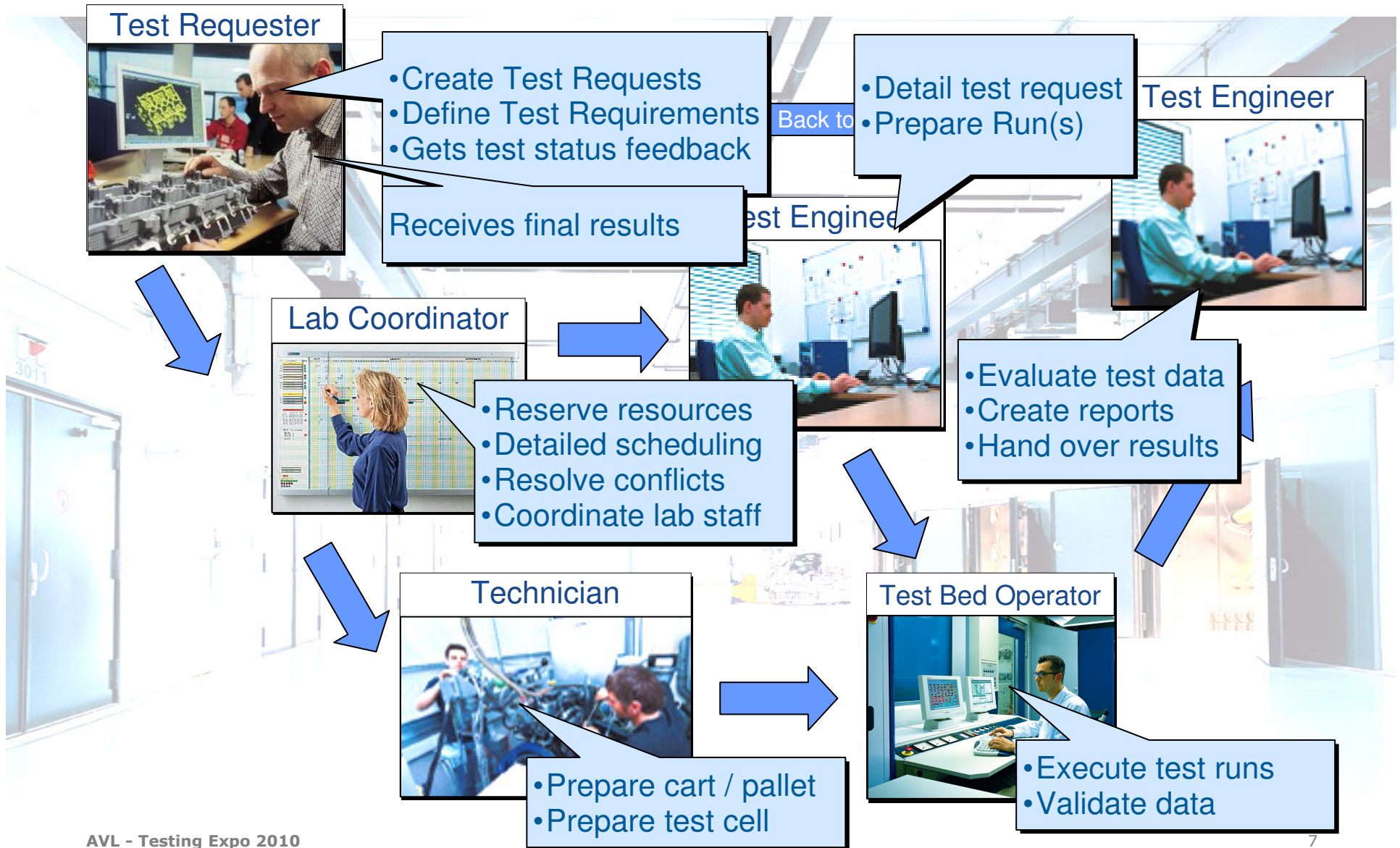


# Work done in a Typical Test Facility

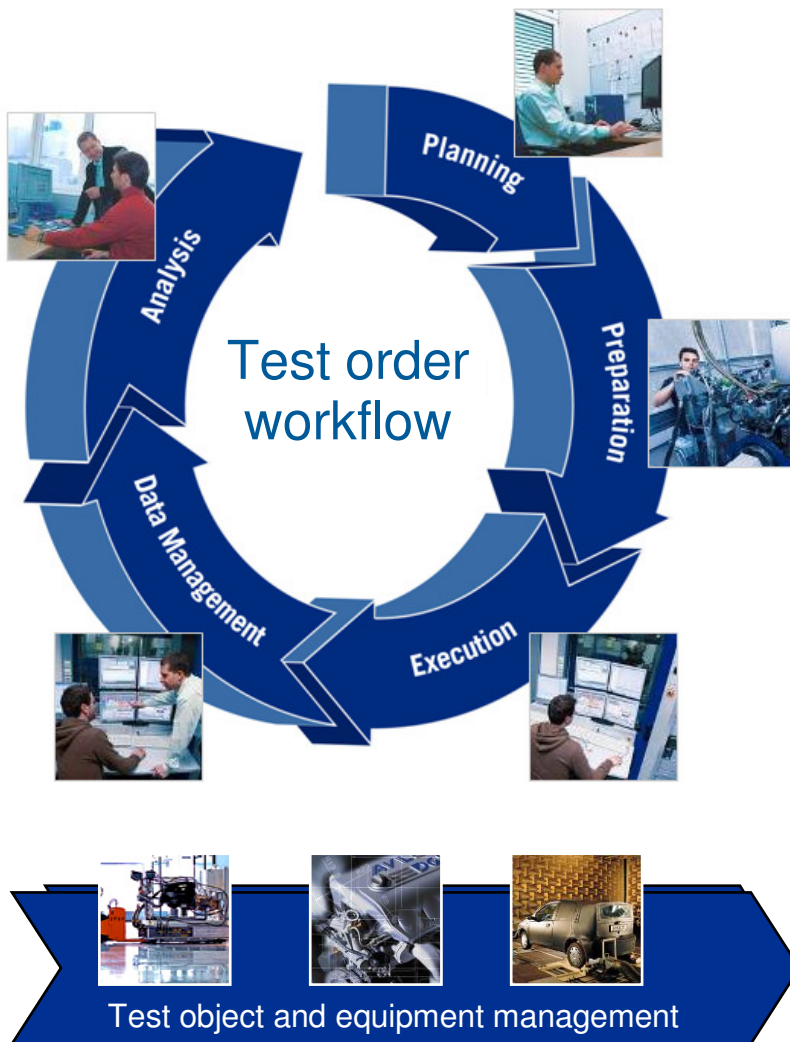




# Work done in a Typical Test Facility



# Typical issues within a test facility

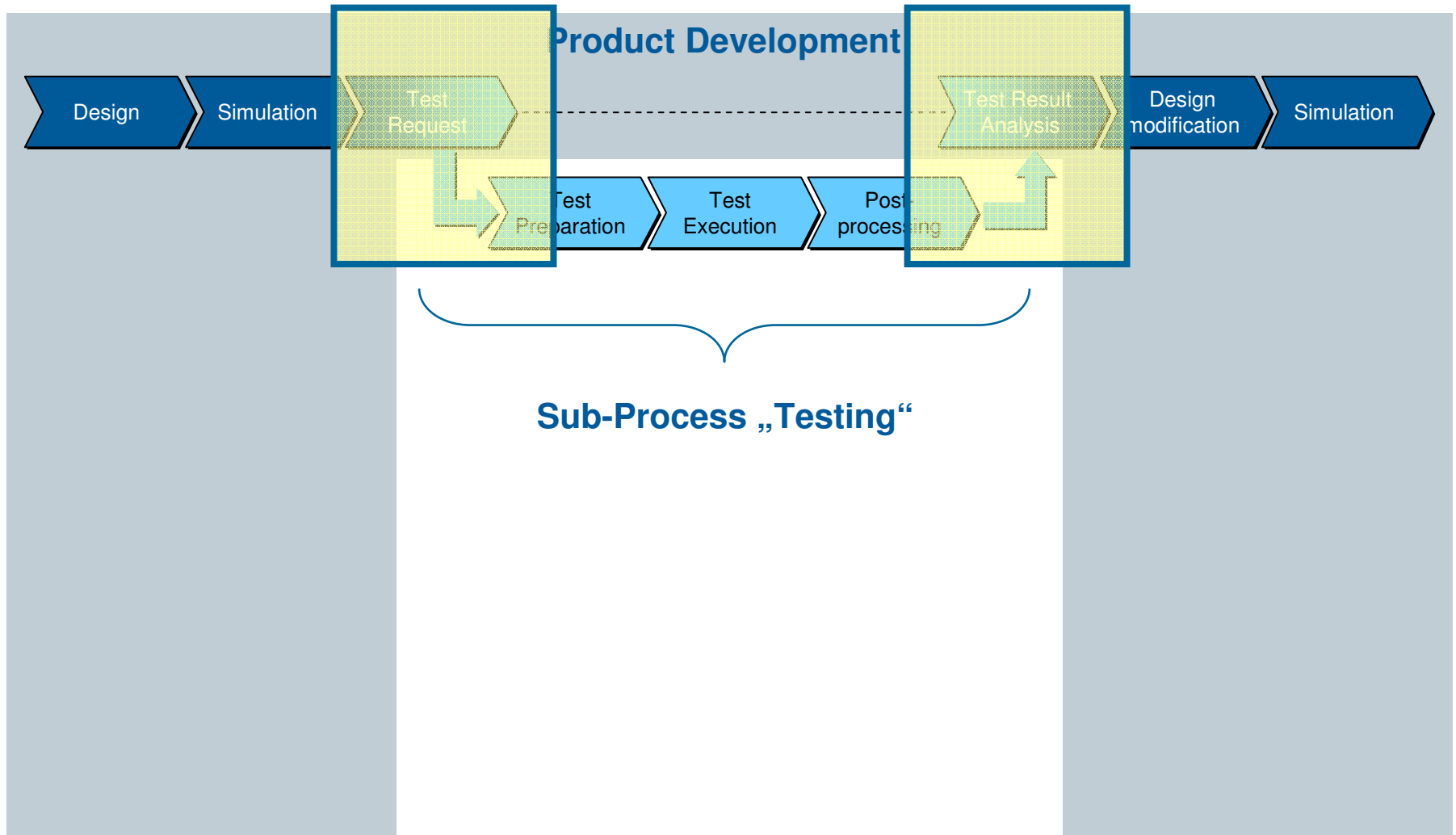


- Test requirements are not well defined
- Information feedback to the “internal customer” is poor and manually driven

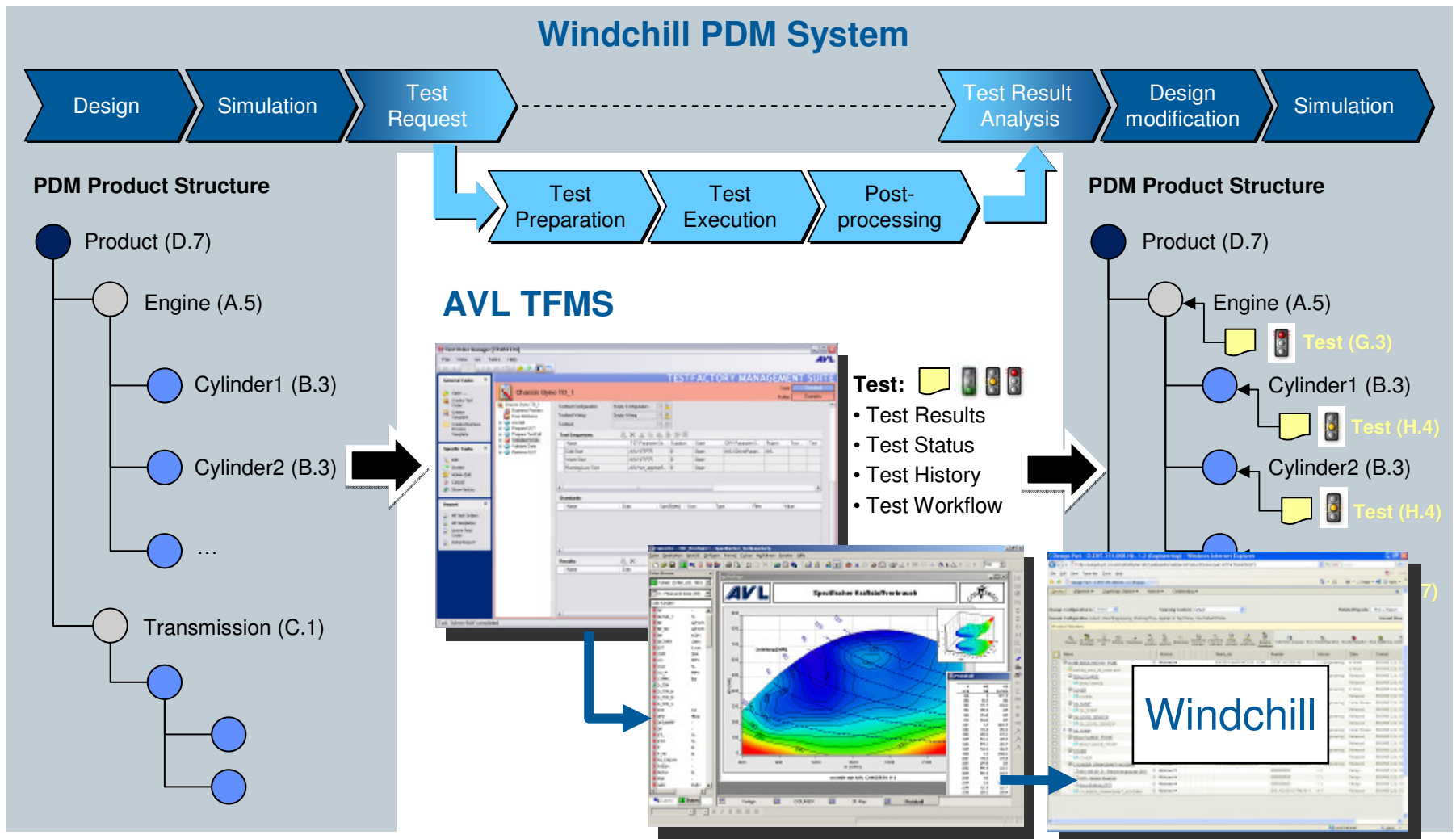
- Test methodology is unclear
- Tasks to complete a test request are not predefined
- Equipment is not calibrated when starting a test
- Devices are not available due to maintenance activities



# Technical Details of the TFMS Integration with Windchill



# Technical Details of the TFMS Integration with Windchill

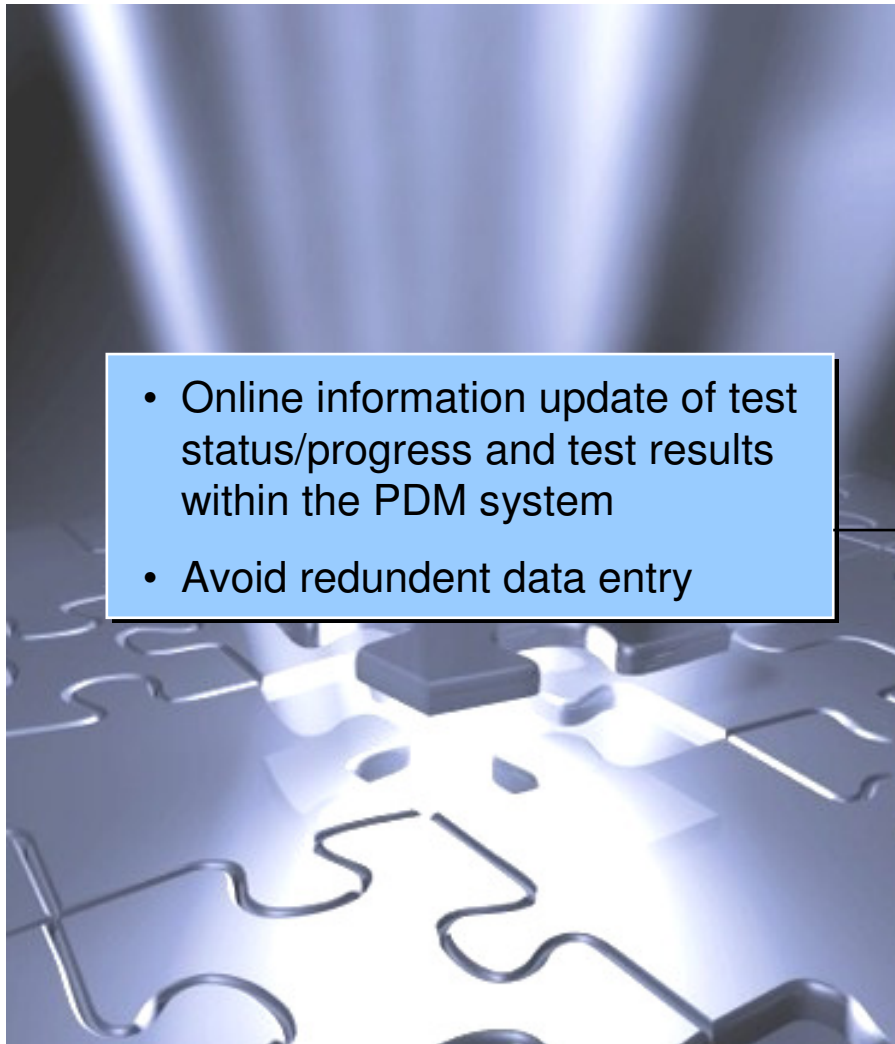


## Benefits of a PDM – TFMS Integrated Solution

- Re-use of product data as unit-under-test data (e.g. cylinder parameters, limits)
- Re-use of PDM pre-conditions for testing (e.g. deadline for test completion)
- Access to product details during testing (drawings, technical specifications)
- Avoid redundant data entry (e.g. entering cylinder parameters twice in PDM and test systems)

- **Up-To-Date product information during testing**
- **Fast and simple access to test data for PDM users within their familiar PDM environment**

## Benefits of a PDM – TFMS Integrated Solution



- Online information update of test status/progress and test results within the PDM system
- Avoid redundant data entry

- **Up-To-Date product information during testing**
- **Fast and simple access to test data for PDM users within their familiar PDM environment**

# Increase Overall Development and Test Efficiency by Integrating PLM and Testing

... using the example of PTC Windchill and AVL TFMS

Dr. Gerald Sammer, 22.6.2010, AVL List GmbH

