

**SIEMENS**



ASAM standards in automotive production enable plug and play like operations

## **SIDIS Pro Test System**

## SIDIS Pro: Content

- Deployments
- SIDIS Pro test system
- SIDIS Pro ASAM ODX
- SIDIS Pro ASAM GDI
- Siemens wheel alignment machine
- Summary

**SIDIS Pro: International Deployments**



## SIDIS Pro: Test System

### SIDIS Pro – Test System

#### ❑ Authoring System

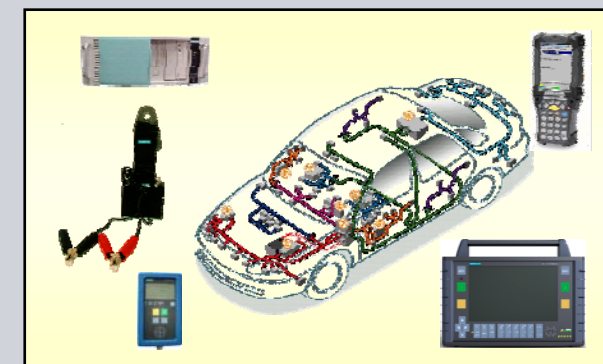
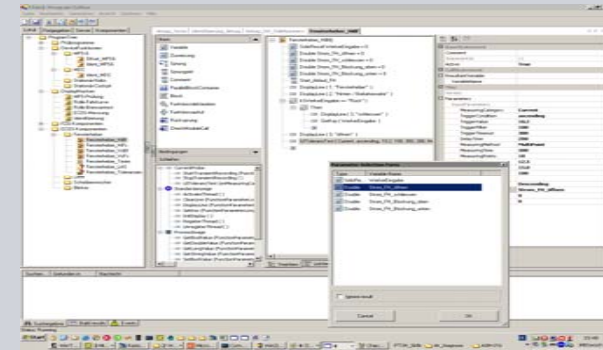
- central authoring of test programs
- debugging and simulation
- version control
- modular programming
- ergonomic user interfaces of test program

#### ❑ Reuse of test modules

#### ❑ Usage of ASAM Standards

- ASAM ODX/MCD
- ASAM GDI

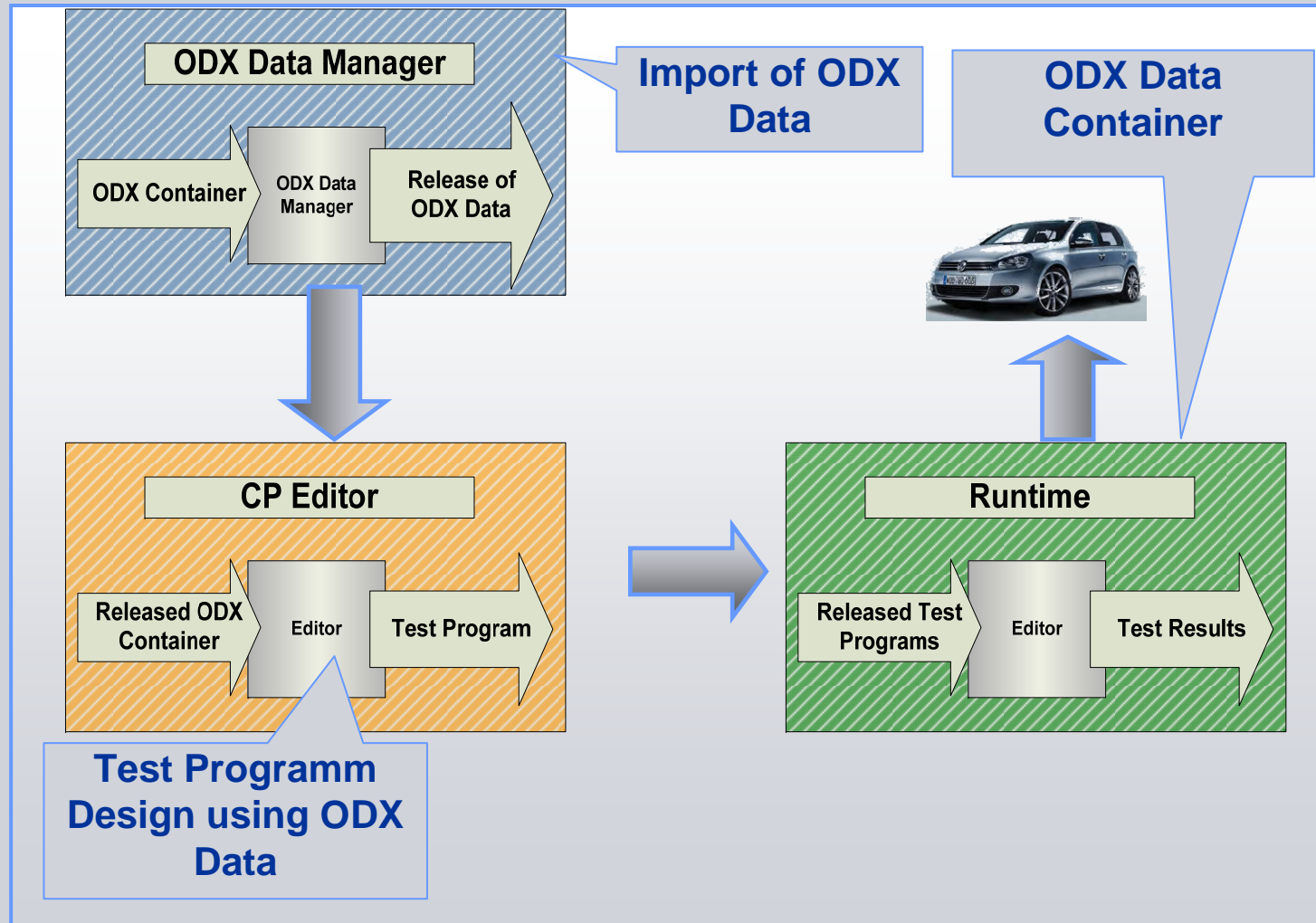
#### ❑ State of the art test hardware



© Siemens AG 2010. All rights reserved.

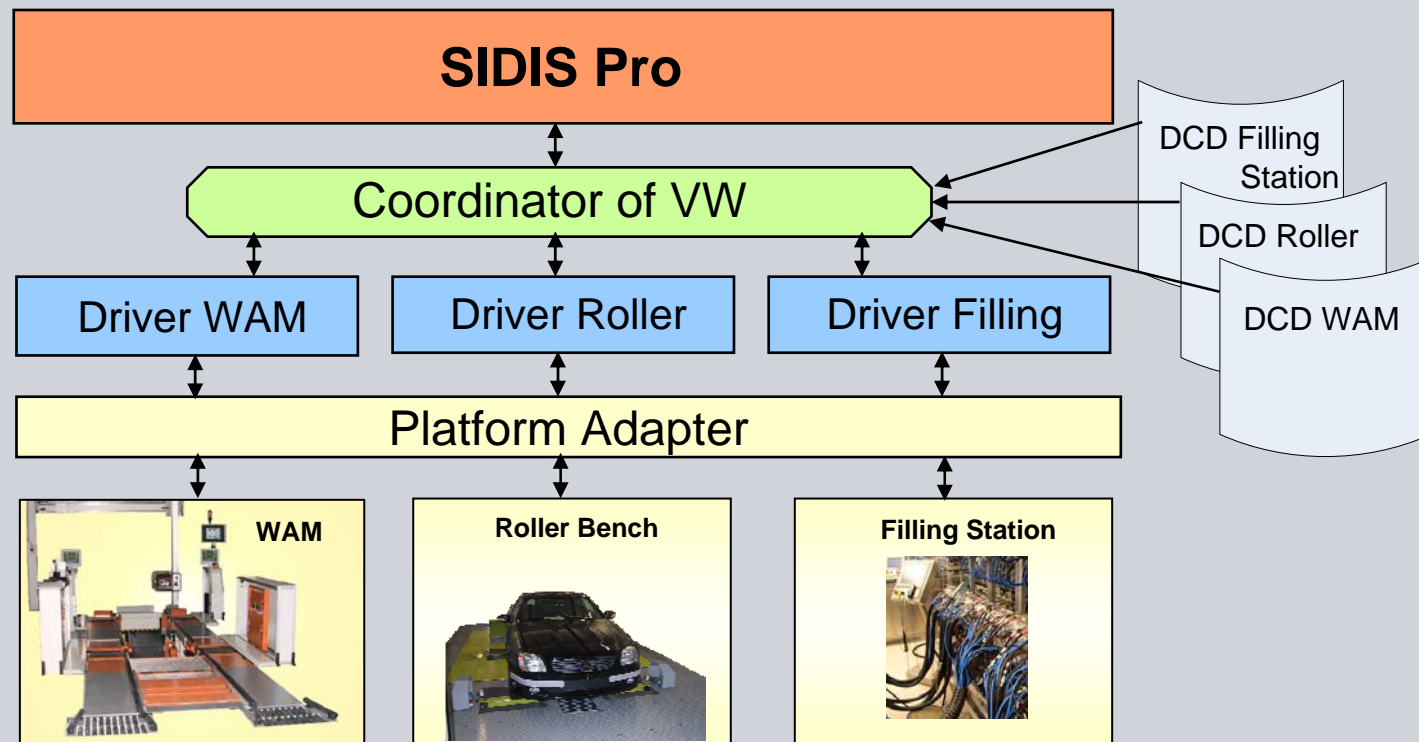
Industry Sector

## SIDIS Pro: ASAM ODX



## SIDIS Pro: ASAM GDI

- ❑ Connection to different devices: WAM, roller bench, filling station
- ❑ Interface to Siemens wheel alignment bench by ASAM GDI API
- ❑ Interface to different devices of different suppliers



© Siemens AG 2010. All rights reserved.



## Siemens Wheel Alignment

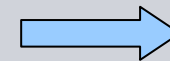
### Siemens Wheel Alignment

#### ❑ Measuring System

- Very high precision with 3DCAM
- Measuring wheels from 12 up to 22 inches without customization
- Measuring wide variety of wheel types without customization

#### ❑ ASAM GDI Driver

- interfacing Test Systems with GDI API
- Driver for Microsoft Windows and Linux
- Platform adapter with UDP interfaces



## Summary

### Volkswagen

- ❑ exchangeable programs need standard interfaces like ASAM GDI and MCD

### Siemens

- ❑ less effort in interface clarifications
- ❑ less effort in interface program
- ❑ short commissioning time
- ❑ optimized project performance
- ❑ reuse of test modules



# Thank You!

## For your attention

Name: Klaus Karpf

Department: I IA AS FA SO EOL

Address: Gleiwitzer Str. 555

90475 Nuremberg

Telephone: +49 (911) 895-2533

Mail: [Klaus.Karpf@Siemens.com](mailto:Klaus.Karpf@Siemens.com)